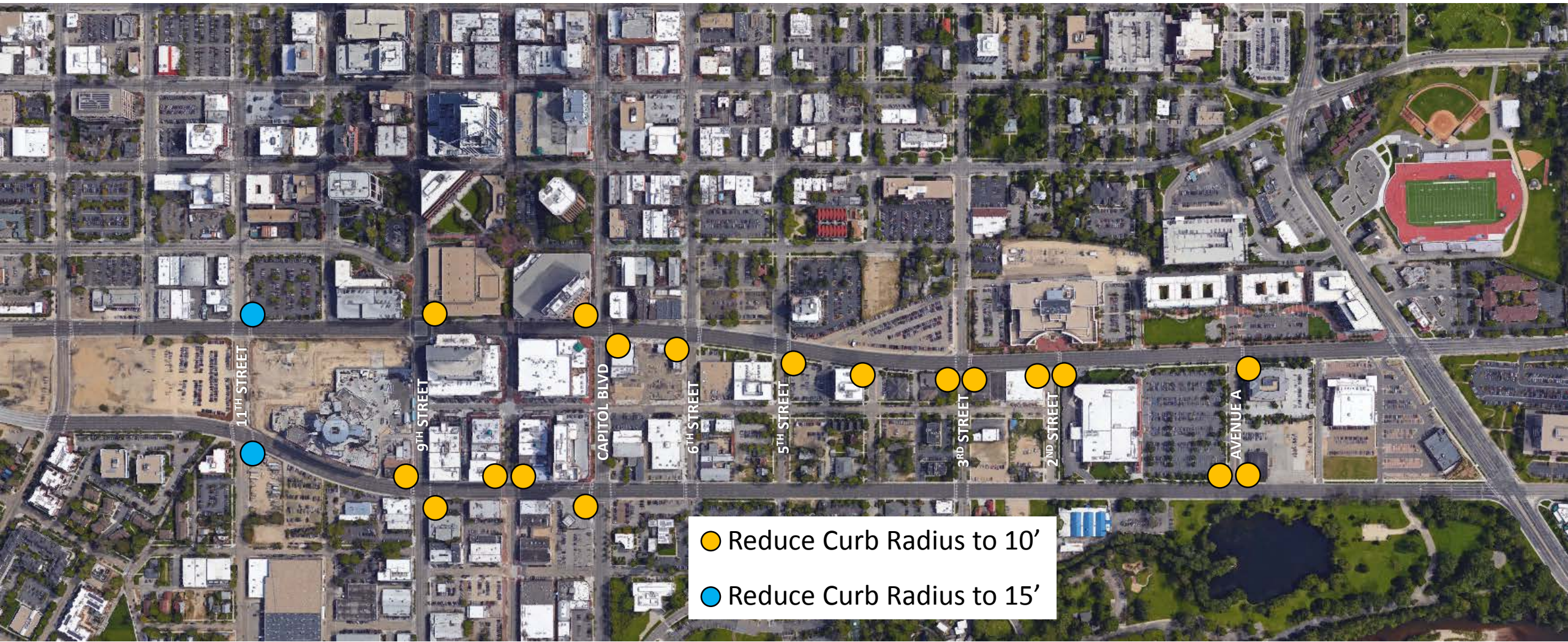


Resolution 1490 Approving
Front & Myrtle
Cooperative Agreement with ITD

Reduced Corner Radii



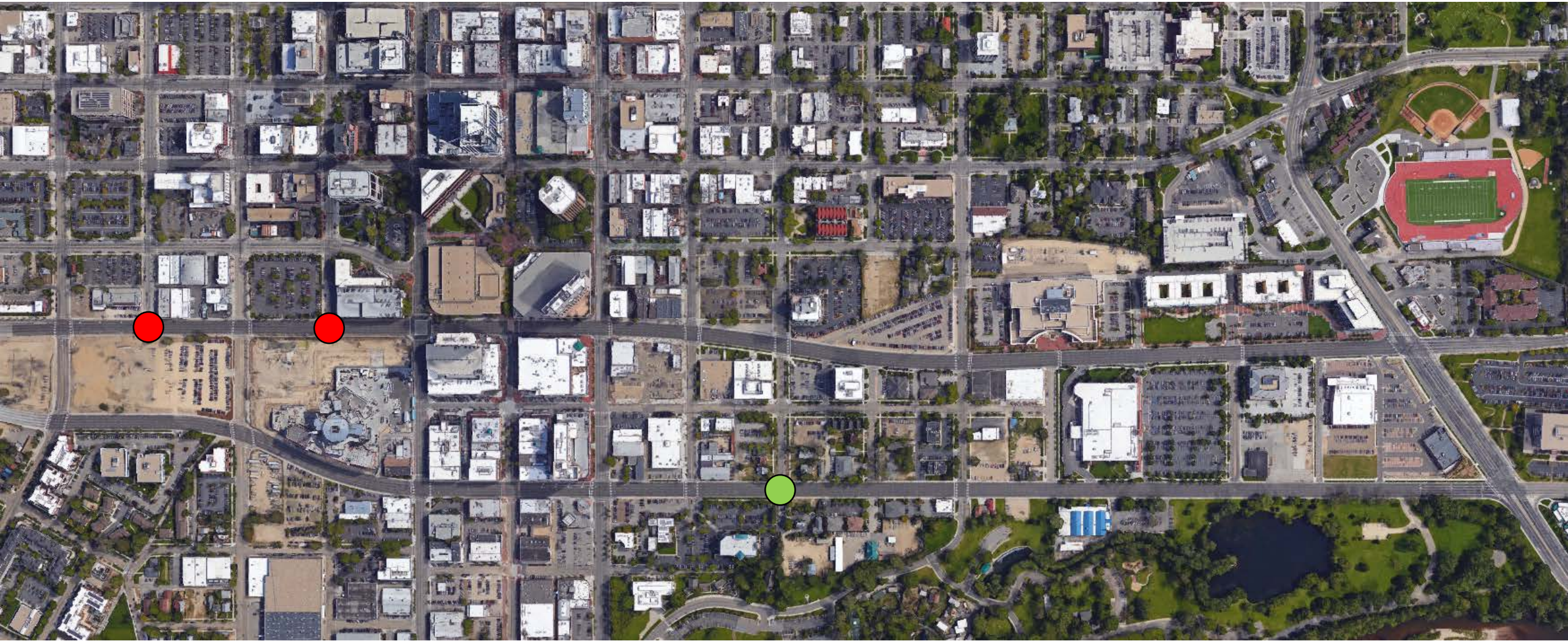
Reduced Corner Radii



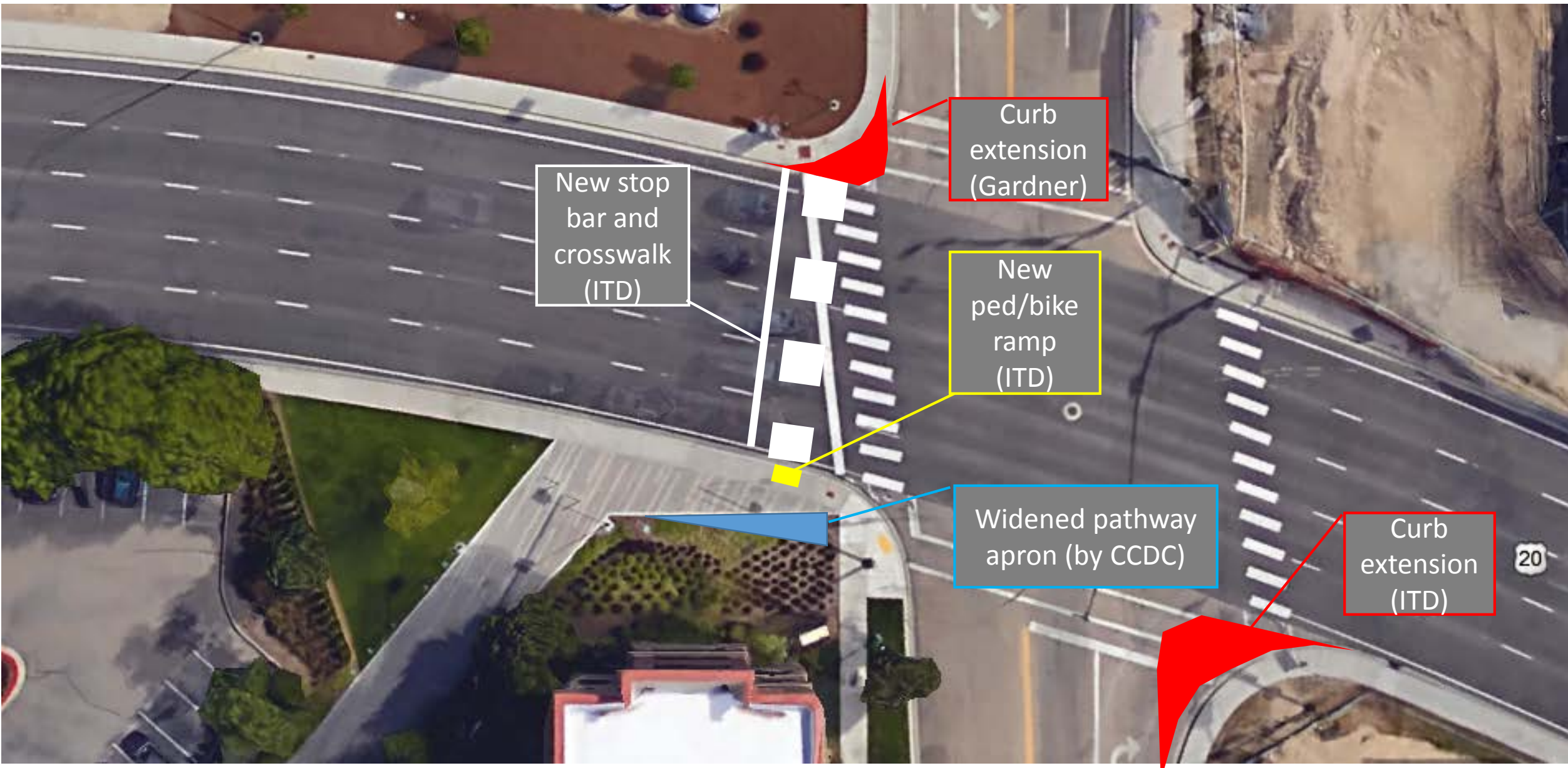
Signal Conduit

● Install Conduit

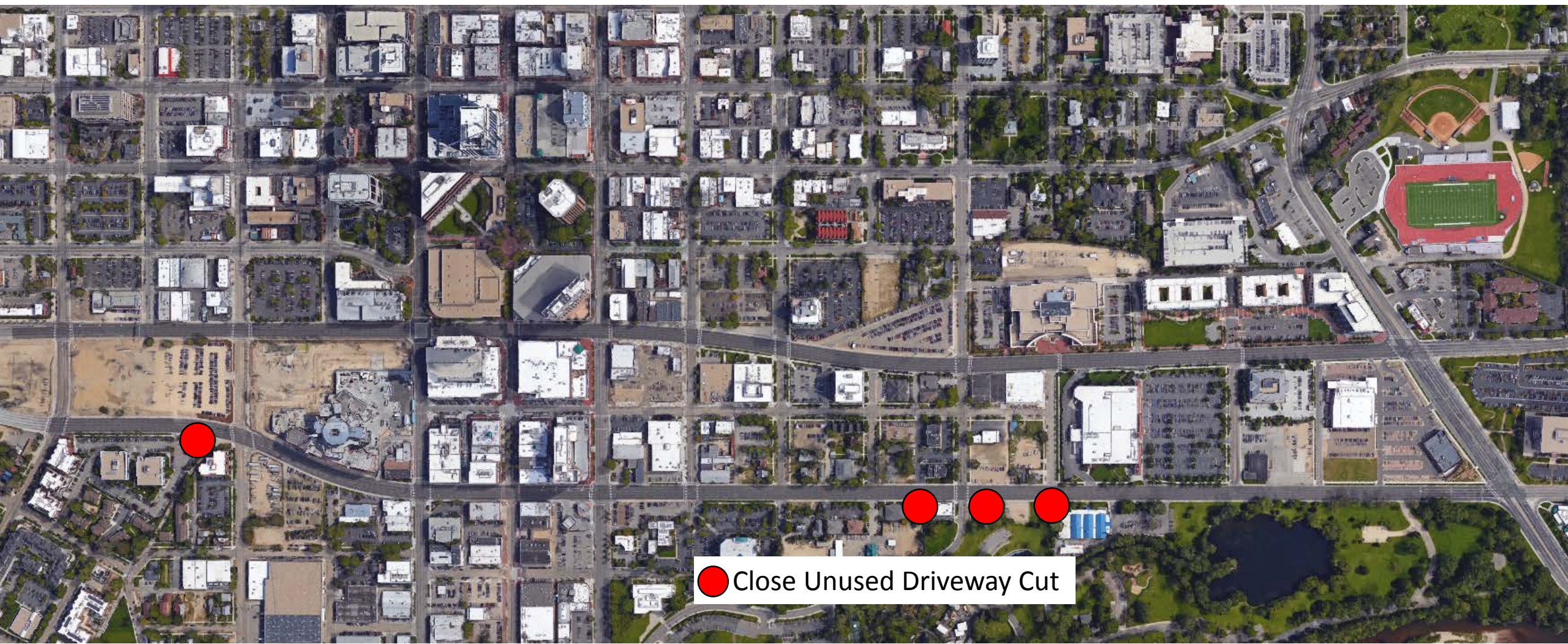
● Conduit Installed by CCDC



Myrtle/11th/Pioneer Pathway



Close Unused Driveways



● Close Unused Driveway Cut

Suggested Motion

I move to adopt Resolution 1490 approving the cooperative agreement with Idaho Transportation Department to implement near term improvements identified by the Front & Myrtle Alternatives Analysis during its US20 resurfacing project in 2017, and authorizing the Agency's Executive Director to execute the agreement.