

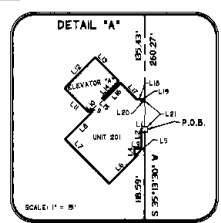
CURVE DATA

CURVE	RADIUS	LENGTH	CHORD	BEARING	DELTA
C-1	200.00	75.91	122.28	S 80°11'41\" W	94°37'12\"
C-2	3400.00	195.93	192.20	S 84°10'31\" W	94°17'33\"
C-3	66.00	62.48	79.36	N 65°11'4\" E	94°37'12\"

PLAT OF
BLOCK TWENTY TWO CONDOMINIUMS
 A PORTION OF LOTS 6 AND 7, ALL OF LOTS 1-5 AND 8-12, PORTION OF VACATED ALLEY, PORTION OF THE VACATED WEST GROVE AND NORTH 8TH STREETS, BLOCK 22, B.C.O.T., SECTION 10, T.3N., R.2E., B.M., BOISE, ADA COUNTY, IDAHO
 1998

LINE DATA

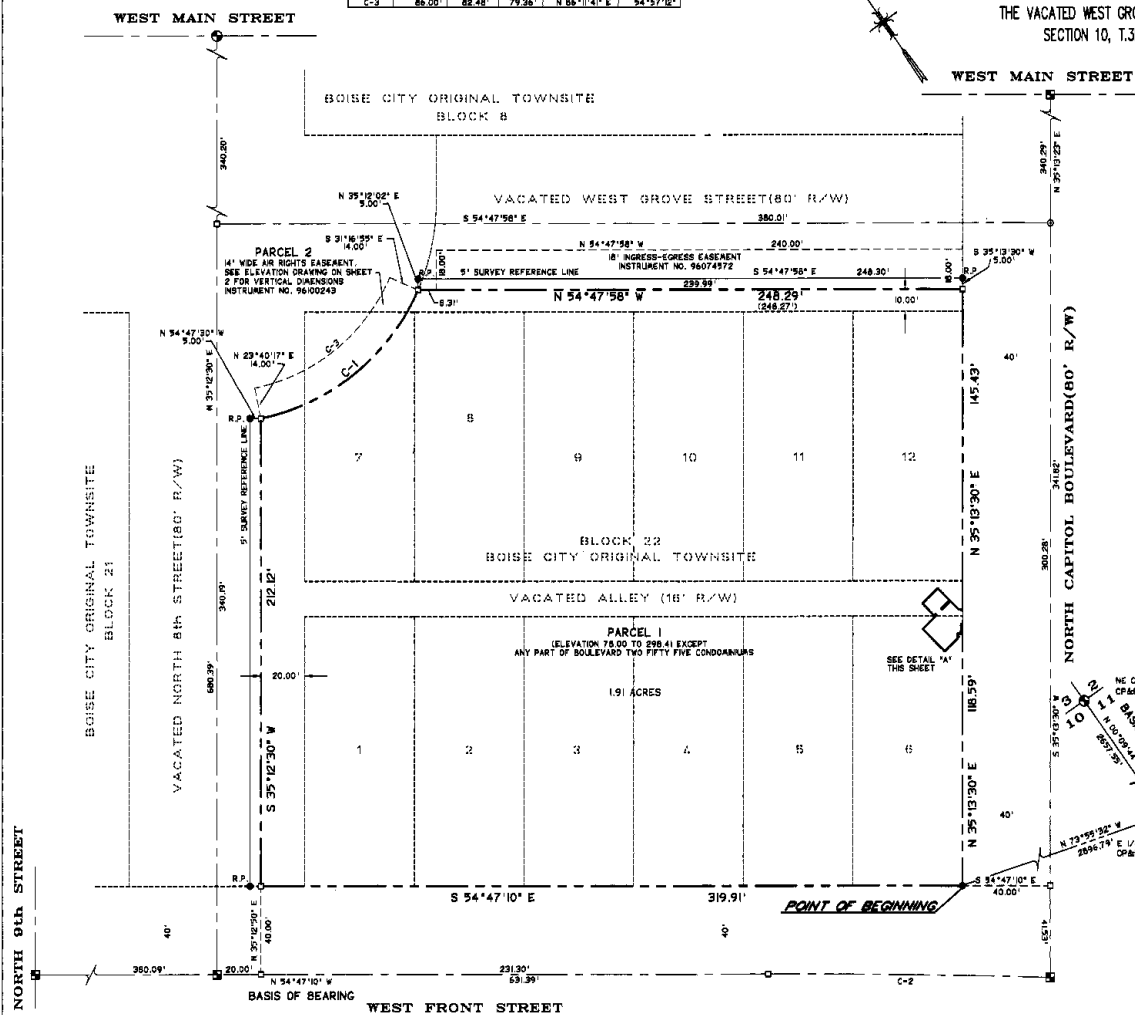
LINE	SECTION	BEARING	LENGTH
1.1	1	N 54°47'58\" W	240.00
1.2	1	N 35°13'30\" E	145.43
1.3	1	N 35°13'30\" E	145.43
1.4	1	N 35°13'30\" E	145.43
1.5	1	N 35°13'30\" E	145.43
1.6	1	N 35°13'30\" E	145.43
1.7	1	N 35°13'30\" E	145.43
1.8	1	N 35°13'30\" E	145.43
1.9	1	N 35°13'30\" E	145.43
1.10	1	N 35°13'30\" E	145.43
1.11	1	N 35°13'30\" E	145.43
1.12	1	N 35°13'30\" E	145.43
1.13	1	N 35°13'30\" E	145.43
1.14	1	N 35°13'30\" E	145.43
1.15	1	N 35°13'30\" E	145.43
1.16	1	N 35°13'30\" E	145.43
1.17	1	N 35°13'30\" E	145.43
1.18	1	N 35°13'30\" E	145.43
1.19	1	N 35°13'30\" E	145.43
1.20	1	N 35°13'30\" E	145.43
1.21	1	N 35°13'30\" E	145.43



- LEGEND**
- LIMITS OF PARCEL 1
 - CENTER LINE
 - ORIGINAL LOT LINE
 - EASEMENT
 - ⊕ FOUND BRASS CAP
 - ⊙ FOUND ALUMINUM CAP
 - ⊙ FOUND 5/8\" IRON PIN w/CAP
 - ⊙ CALCULATED POINT, NOT SET
 - (100.00) DATA OF RECORD
 - R.P. REFERENCE POINT

NOTES

- BUILDING SETBACKS SHALL BE IN ACCORDANCE WITH THE ZONING ORDINANCE AT THE TIME OF BEARING OF THE BUILDING PERMIT, OR AS ALLOWED BY CONDITIONAL USE.
- ANY IMPROVEMENTS TO THIS CONDOMINIUM SHALL CONFORM TO THE APPLICABLE ZONING REGULATIONS IN EFFECT AT THE TIME OF IMPROVEMENT, OR AS ALLOWED BY CONDITIONAL USE.
- DECLARANT WILL COMPLY WITH THE DISCLOSURE REQUIREMENTS OF SECTION 91-3005 OF THE IDAHO CODE.
- COMMON AREA USES ARE DESIGNATED IN THE CONDOMINIUM DECLARATION.
- FIRST FLOOR SURVEY TIES ARE SHOWN ON THIS SHEET.
- ELEVATIONS ARE ASSUMED, WITH FIRST FLOOR ELEVATION DATUM OF 100.00.
- SURVEY DISTANCES ALONG THE EXTERIOR BUILDING LINES ARE TO THE EXTERIOR FACE OF THE BUILDING.
- THE UTILITY EASEMENTS GRANTED HEREIN AND IN ACCORDANCE WITH THIS PLAT SHALL RUN WITH THE LAND AND SURVIVE ANY EXTINGUISHMENT OR ABANDONMENT OF THE CONDOMINIUM DECLARATION.
- THE PHYSICAL BOUNDARIES OF THE UNITS ARE THE INTERIOR SURFACE OF THE PERIMETER WALLS, FLOORS, CEILING, WINDOWS AND DOORS THEREOF, AS SHOWN, TOGETHER WITH THE PORTIONS OF THE BUILDINGS SO DESCRIBED AND THE AIR SPACE SO ENCOMPASSED. THE FOLLOWING ARE NOT PART OF THE UNIT: BEARING WALLS, COLUMNS, FLOORS, ROOFS, FOUNDATIONS, CENTRAL HEATING, CENTRAL REFRIGERATION, CENTRAL AIR-CONDITIONING EQUIPMENT, REFRIGERATORS, PUMPS AND OTHER CENTRAL SERVICES, PIPES, DUCTS, FUSES, CIRCUIT BREAKERS, WIRES AND OTHER UTILITY INSTALLATIONS, INCLUDING LOCATED, EXCEPT THE OUTLETS THEREOF WHEN LOCATED WITHIN THE UNIT. IN INTERPRETING THE DECLARATION, PLAT AND/OR DEED, THE EXISTING PHYSICAL BOUNDARIES OF THE UNIT AS ORIGINALLY CONSTRUCTED OR RECONSTRUCTED IN FULL THEREOF SHALL BE CONSIDERED PRECEDENT TO ITS DIMENSIONS RATHER THAN THE METERS AND BOUNDS EXPRESSED OR DENIED IN THE SAID DECLARATION, PLAT AND/OR DEEDS REGARDLESS OF ANY VARIANCES BETWEEN DIMENSIONS, BOUNDS IN THE SAID DECLARATION, PLAT AND/OR DEEDS AND THE ACTUAL BOUNDARIES OF THE UNITS IN THE BUILDING.
- FOR INFORMATION CONCERNING THE USER'S RESPONSIBILITIES AND RELATIONSHIPS OF THE UNIT AND COMMON AREA, SEE THE CONDOMINIUM DECLARATION FOR BLOCK TWENTY TWO CONDOMINIUMS FILED FOR RECORD IN THE OFFICE OF THE ADA COUNTY RECORDER.
- NO CONDOMINIUM UNIT SHALL BE DIVIDED OR ADJUSTED WITHOUT COMPLYING WITH PROVISIONS OF IDAHO CITY CODE, TITLE 9, CHAPTER 20.
- PORTIONS OF THE UNITS 1, 2, 3 AND 4 ARE SUBJECT TO HOMEOWNER EASEMENTS PREVIOUSLY PROVIDED AND EXPRES AS PROVIDED IN SECTION 519 OF THE CONDOMINIUM DECLARATION FOR BLOCK 22 CONDOMINIUMS.

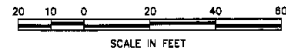


TEALEY'S LAND SURVEYING
 109 & 4th ST. BOISE, IDAHO
 208-385-0836
 Project No. 1781 Sheet 1 of 13

PLAT OF BLOCK TWENTY TWO CONDOMINIUMS

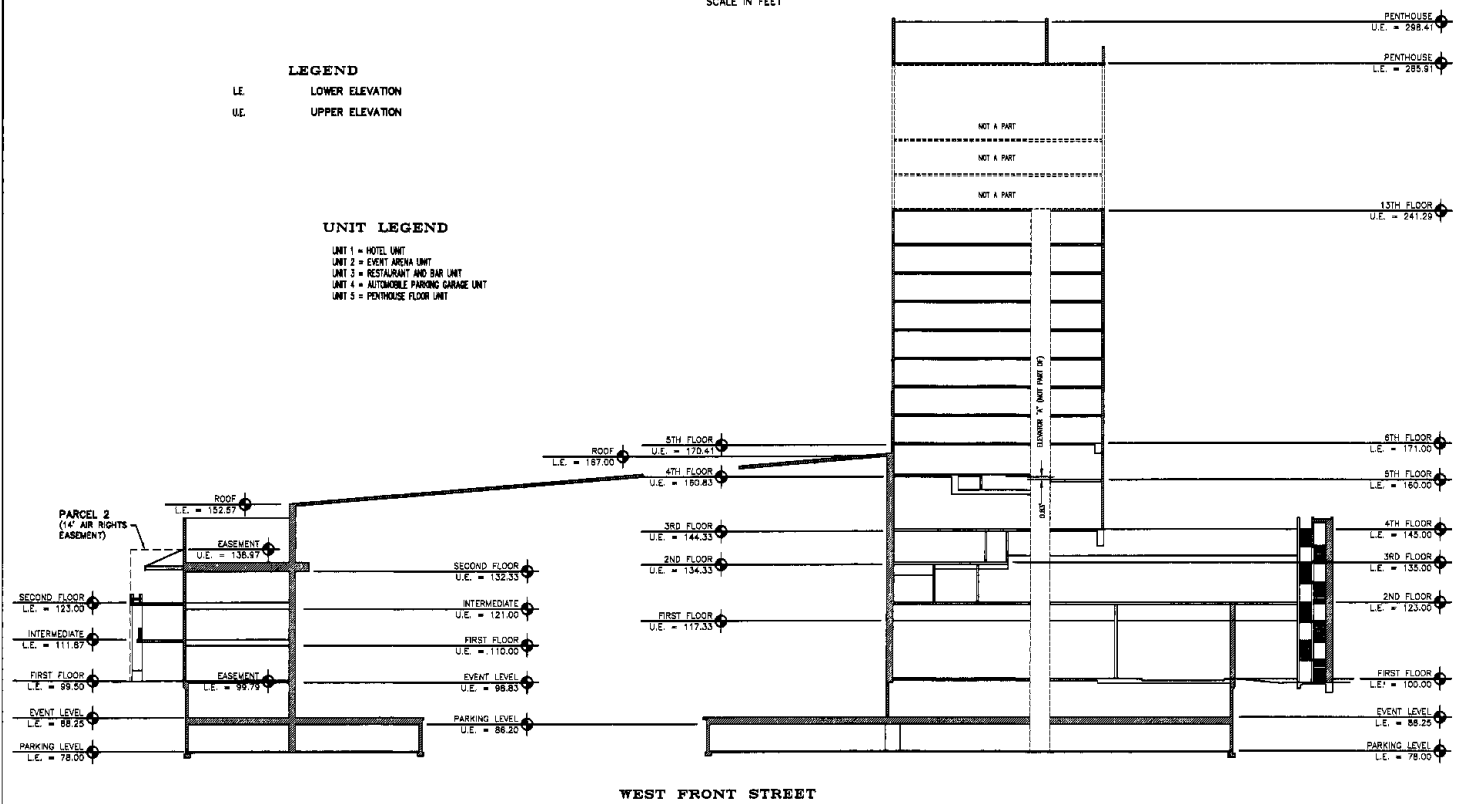
A PORTION OF LOT 7, ALL OF LOTS 1-6 AND 8-12, VACATED ALLEY,
PORTION OF VACATED WEST GROVE AND VACATED 8TH STREETS,
BLOCK 22, B.G.O.T., SECTION 10, T.3N., R.2E., B.M.,
BOISE, ADA COUNTY, IDAHO

1998 ELEVATION



LEGEND
L.E. LOWER ELEVATION
U.E. UPPER ELEVATION

UNIT LEGEND
UNIT 1 = HOTEL UNIT
UNIT 2 = EVENT AREA UNIT
UNIT 3 = RESTAURANT AND BAR UNIT
UNIT 4 = AUTOMOBILE PARKING GARAGE UNIT
UNIT 5 = PENTHOUSE FLOOR UNIT



WEST FRONT STREET

TEALEY'S LAND SURVEYING
108 S. 4th ST. BOISE, IDAHO

Job No. 1781 SHEET 2 OF 13

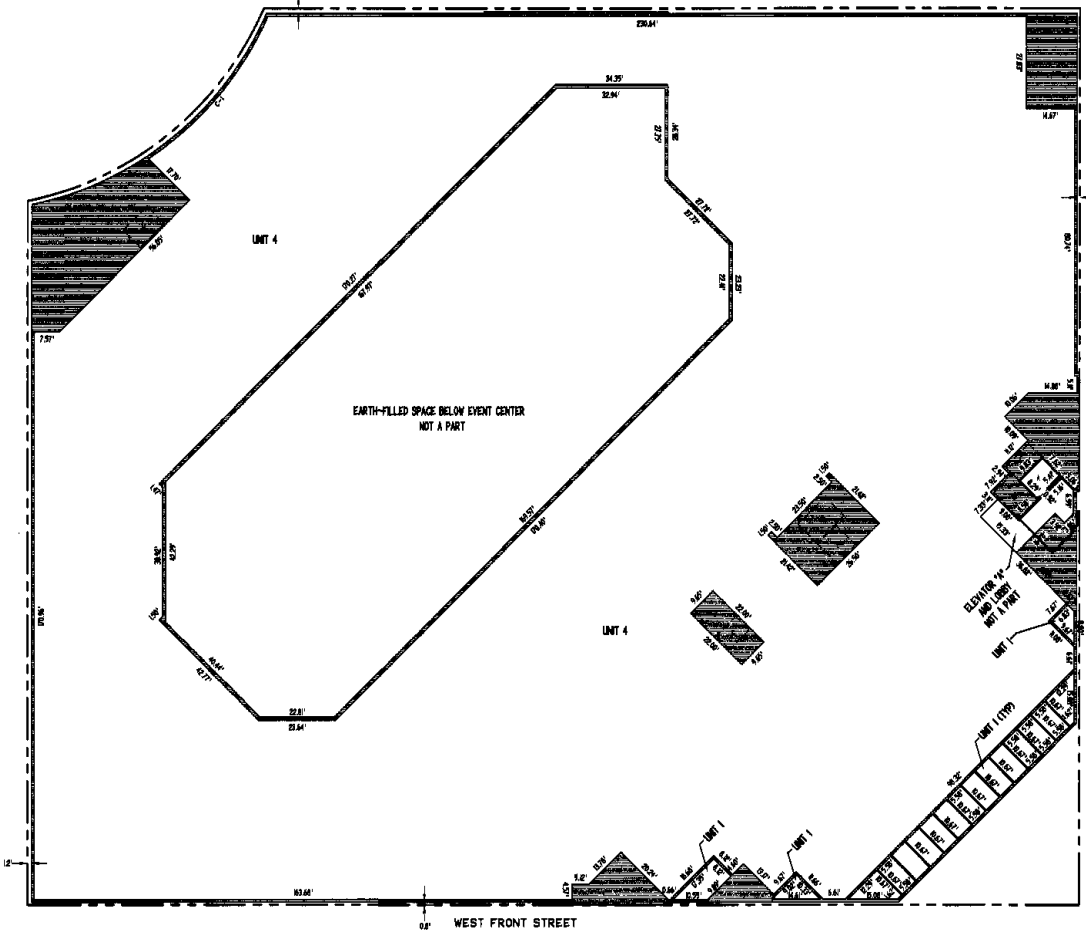
PLAT FOR
BLOCK TWENTY TWO CONDOMINIUMS
 A PORTION OF LOT 7, ALL OF LOTS 1-6 AND 8-12, VACATED ALLEY, PORTION OF VACATED WEST GROVE AND 8TH STREETS, BLOCK 22,
 B.C.O.T., SECTION 10, T.3N., R.2E., B.M., BOISE, ADA COUNTY, IDAHO
 1998
PARKING LEVEL

CURVE DATA

CHORD	ARC	ANGLE	LENGTH	BEARING	DELTA
100.20'	100.20'	90.00°	100.20'	S 0° 00' 00" E	90.00°
100.20'	100.20'	90.00°	100.20'	S 0° 00' 00" E	90.00°

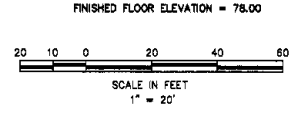
LEGEND

UNIT 1	UNIT NUMBER
---	LIMITS OF PARCEL 1
[Hatched Box]	COMMON AREA
A, B, C, C, C, H	ELEVATOR SHAFTS



UNIT LEGEND

UNIT 1	HOTEL UNIT
UNIT 2	EVENT ARENA UNIT
UNIT 3	RESTAURANT AND BAR UNIT
UNIT 4	AUTOMOBILE PARKING GARAGE UNIT
UNIT 5	PENTHOUSE FLOOR UNIT



TEALEY'S LAND SURVEYING
 108 S. 4th ST. BOISE, IDAHO 83725
 208-385-0836
 Job No. 1781 Sheet 3 of 13

Bk75 Pg 7832

PLAT FOR
BLOCK TWENTY TWO CONDOMINIUMS
 A PORTION OF LOT 7, ALL OF LOTS 1-6 AND 8-12, VACATED ALLEY, PORTION OF VACATED WEST GROVE AND 8TH STREETS, BLOCK 22,
 B.C.O.T., SECTION 10, T.3N., R.2E., B.M., BOISE, ADA COUNTY, IDAHO
 1998

CURVE DATA

CURVE	DATE	ANGLE	LENGTH	CHORD	CHORD BEARING	BEARING	BEARING
C-1	03/91	90.91°	34.81'	34.81'	S 90° 51' 21" E	S 90° 51' 21" E	S 90° 51' 21" E

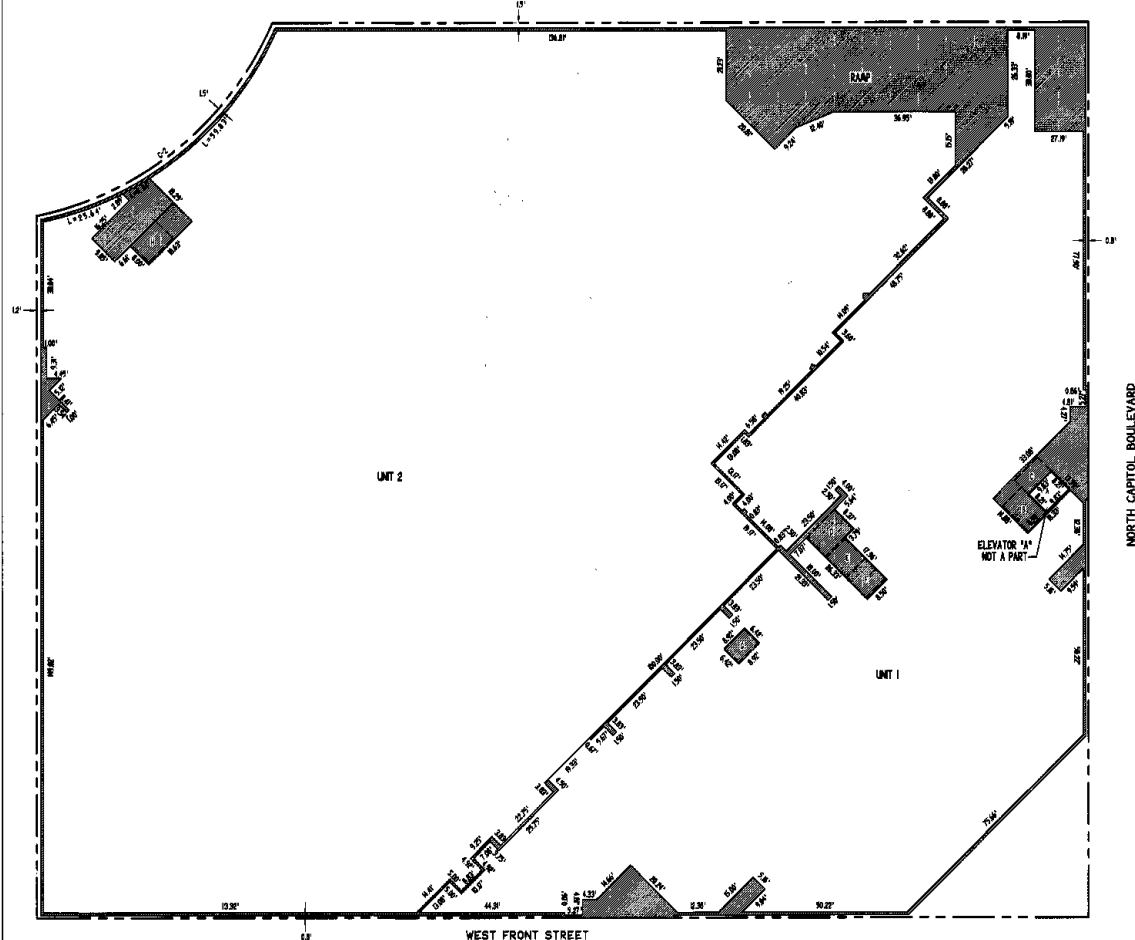
EVENT LEVEL

LEGEND

- UNIT 1
- UNIT NUMBER
- LIMITS OF PARCEL 1
- COMMON AREA
- A, B, C, D, E, F, G, H ELEVATOR SHAFTS

UNIT LEGEND

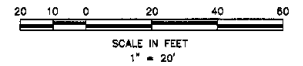
- UNIT 1 = HOTEL UNIT
- UNIT 2 = EVENT AREA UNIT
- UNIT 3 = RESTAURANT AND BAR UNIT
- UNIT 4 = AUTOMOBILE PARKING GARAGE UNIT
- UNIT 5 = PENTHOUSE FLOOR UNIT



NORTH CAPITOL BOULEVARD

WEST FRONT STREET

FINISHED FLOOR ELEVATION = 88.25

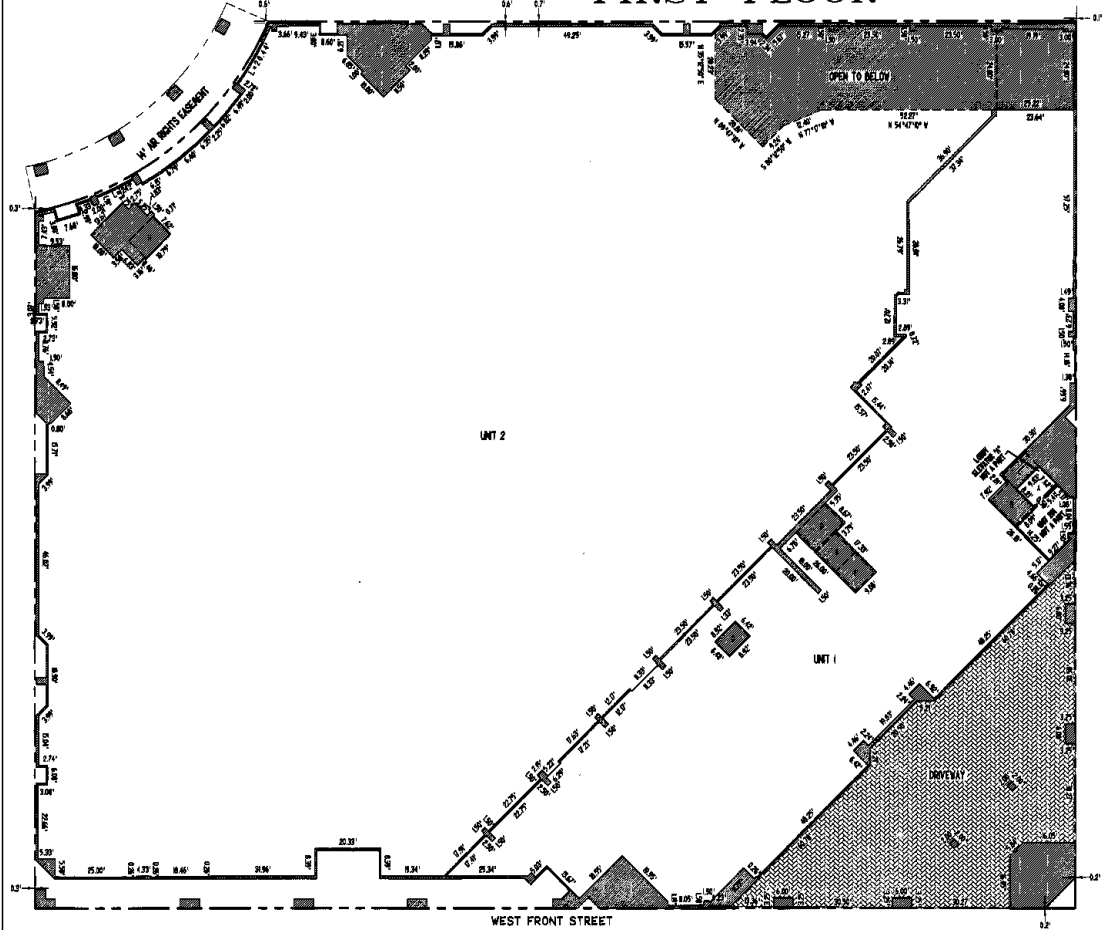


TEALEY'S LAND SURVEYING

108 S. 4th ST. BOISE, IDAHO 208-385-0638
 Job No. 1781 Sheet 4 of 13

PLAT FOR
BLOCK TWENTY TWO CONDOMINIUMS
 A PORTION OF LOT 7, ALL OF LOTS 1-6 AND 8-12, VACATED ALLEY, PORTION OF VACATED WEST GROVE AND 8TH STREETS, BLOCK 22,
 B.C.O.T., SECTION 10, T.3N., R.2E., B.M., BOISE, ADA COUNTY, IDAHO
 1998

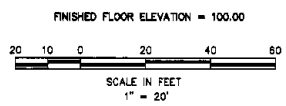
FIRST FLOOR



- LEGEND**
- UNIT 101
 - UNIT NUMBER
 - LIMITS OF PARCEL 1
 - COMMON AREA
 - LIMITED COMMON AREA
 - ELEVATOR SHAFTS



- UNIT LEGEND**
- UNIT 1 = HOTEL UNIT
 - UNIT 2 = EVENT ARENA UNIT
 - UNIT 3 = RESTAURANT AND BAR UNIT
 - UNIT 4 = AUTOMOBILE PARKING GARAGE UNIT
 - UNIT 5 = PENTHOUSE FLOOR UNIT

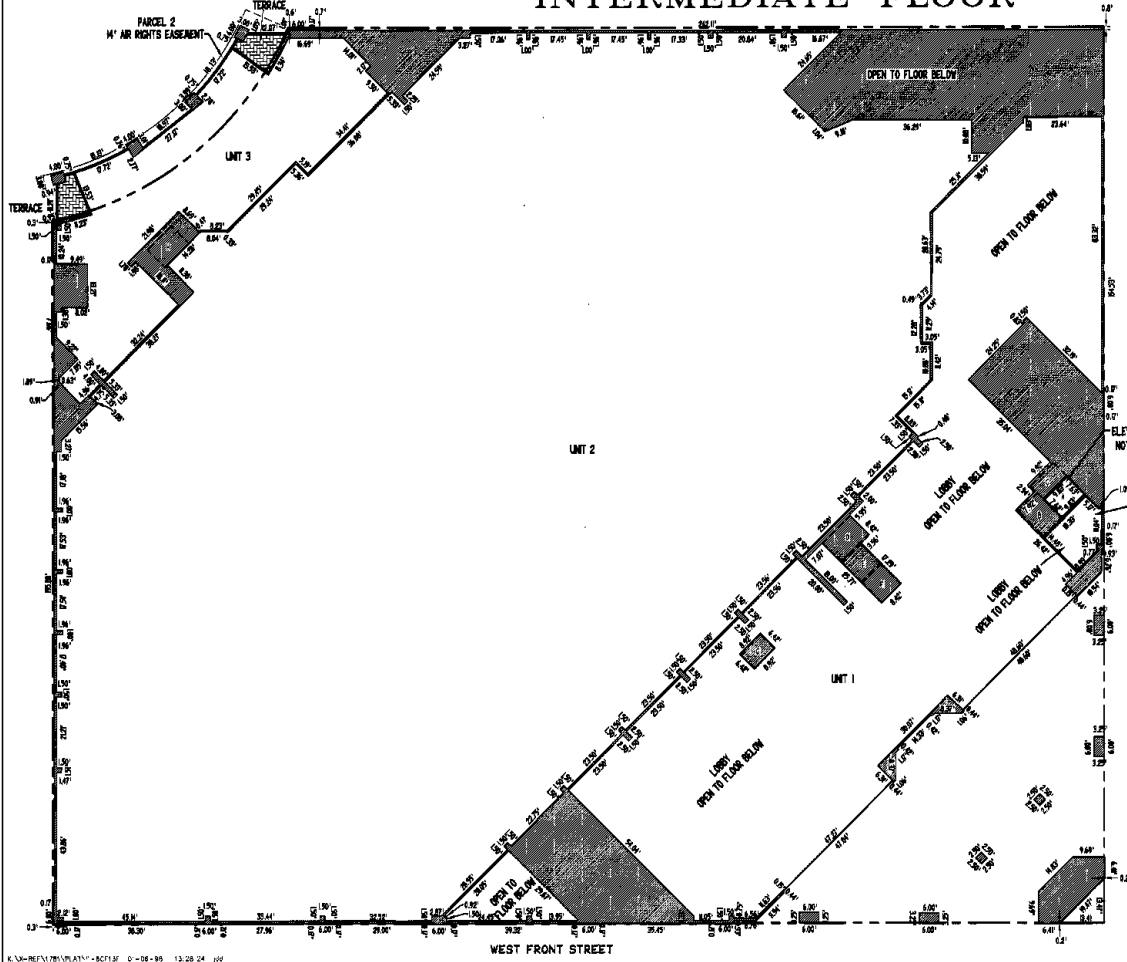


TEALEY'S LAND SURVEYING
 108 S. 4th ST. BOISE, IDAHO
 Job No. 1781 Sheet 5 of 13

3475 - 7834

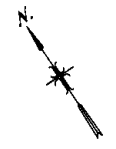
PLAT FOR
BLOCK TWENTY TWO CONDOMINIUMS
 A PORTION OF LOT 7, ALL OF LOTS 1-6 AND 8-12, VACATED ALLEY, PORTION OF VACATED WEST GROVE AND 8TH STREETS, BLOCK 22,
 B.C.O.T., SECTION 10, T.3N., R.2E., B.M., BOISE, ADA COUNTY, IDAHO
 1998

INTERMEDIATE FLOOR



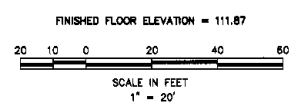
LEGEND

UNIT 1	UNIT NUMBER
---	LIMITS OF PARCEL 1
[Stippled Area]	COMMON AREA
[Cross-hatched Area]	LIMITED COMMON AREA
A, B, C, D, E, F, G, H	ELEVATOR SHAFTS
---	EASEMENT LINE



UNIT LEGEND

UNIT 1	HOTEL UNIT
UNIT 2	EVENT ARENA UNIT
UNIT 3	RESTAURANT AND BAR UNIT
UNIT 4	AUTOMOBILE PARKING GARAGE UNIT
UNIT 5	PENTHOUSE FLOOR UNIT

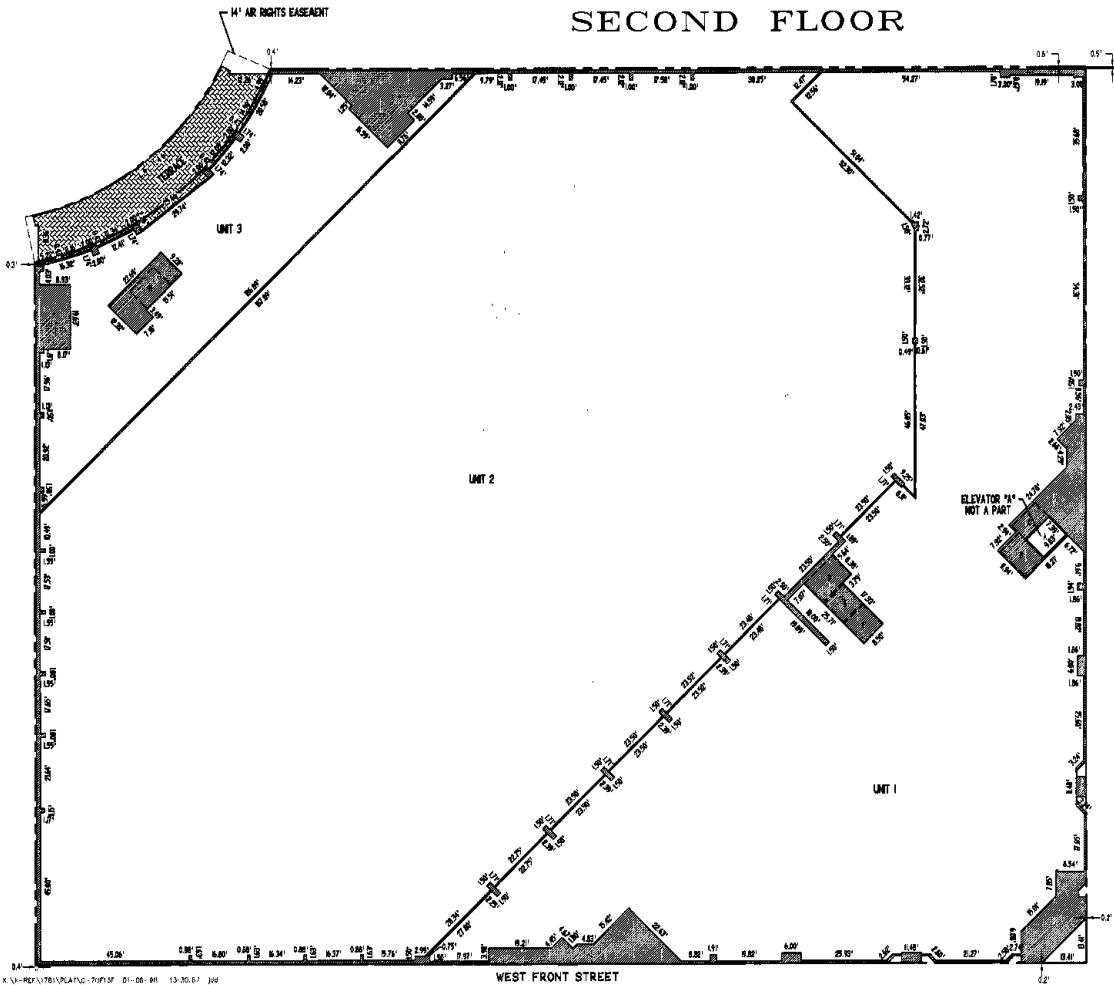


TEALEY'S LAND SURVEYING
 108 S. 4th ST. BOISE, IDAHO 83725
 208-388-0836
 Job No. 1781 Sheet 6 of 13

2610 Pg 7835

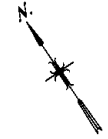
PLAT FOR
BLOCK TWENTY TWO CONDOMINIUMS
 A PORTION OF LOT 7, ALL OF LOTS 1-6 AND 8-12, VACATED ALLEY, PORTION OF VACATED WEST GROVE AND 8TH STREETS, BLOCK 22,
 B.C.O.T., SECTION 10, T.3N., R.2E., B.M., BOISE, ADA COUNTY, IDAHO
 1998

SECOND FLOOR



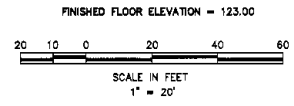
LEGEND

UNIT 1	UNIT NUMBER
---	LIMITS OF PARCEL 1
[Hatched Box]	COMMON AREA
[Cross-hatched Box]	LIMITED COMMON AREA
A, B, C, D, E, F, G, H	ELEVATOR SHAFTS
---	EASEMENT LINE



UNIT LEGEND

UNIT 1	= HOTEL UNIT
UNIT 2	= EVENT ARENA UNIT
UNIT 3	= RESTAURANT AND BAR UNIT
UNIT 4	= AUTOMOBILE PARKING GARAGE UNIT
UNIT 5	= PENTHOUSE FLOOR UNIT



TEALEY'S LAND SURVEYING
 108 S. 4th ST. BOISE, IDAHO 83720
 208-385-0838
 Job No. 1781 Sheet 7 of 13

Bk75 Pg 7836

PLAT FOR
BLOCK TWENTY TWO CONDOMINIUMS
 A PORTION OF LOT 7, ALL OF LOTS 1-6 AND 8-12, VACATED ALLEY, PORTION OF VACATED WEST GROVE AND 8TH STREETS, BLOCK 22,
 B.C.O.T., SECTION 10, T.3N., R.2E., B.M., BOISE, ADA COUNTY, IDAHO
 1998
THIRD FLOOR

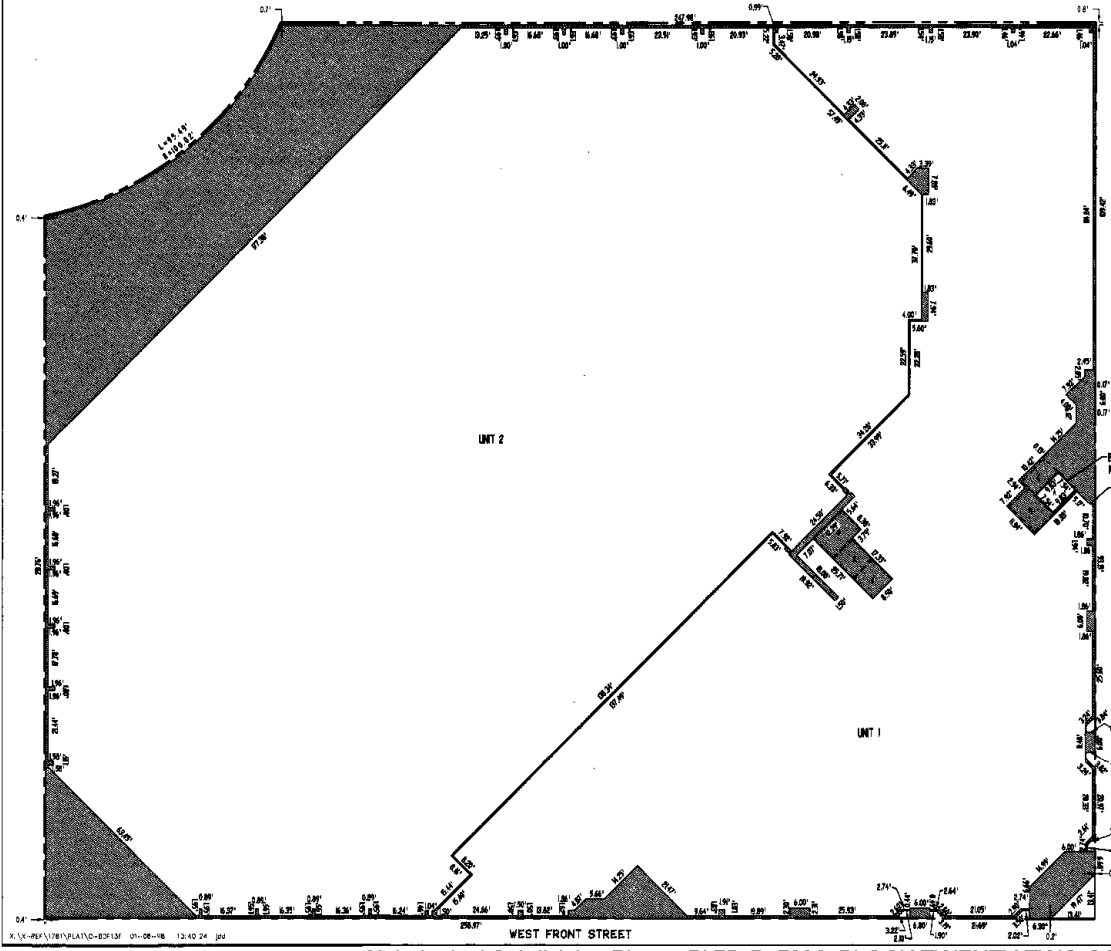
LEGEND

UNIT 1	UNIT NUMBER
---	LIMITS OF PARCEL 1
[Hatched Box]	COMMON AREA
A.B.C.D.E.F.	ELEVATOR SHAFTS

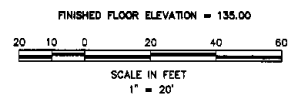


UNIT LEGEND

UNIT 1	= HOTEL UNIT
UNIT 2	= EVENT AREA UNIT
UNIT 3	= RESTAURANT AND BAR UNIT
UNIT 4	= AUTOMOBILE PARKING GARAGE UNIT
UNIT 5	= PENTHOUSE FLOOR UNIT



NORTH CAPITOL BOULEVARD



TEALEY'S LAND SURVEYING
 100 S. 4th ST. BOISE, IDAHO
 208-388-0838
 Job No. 1781 Sheet 8 of 13

PLAT FOR
BLOCK TWENTY TWO CONDOMINIUMS
 A PORTION OF LOT 7, ALL OF LOTS 1-6 AND 8-12, VACATED ALLEY, PORTION OF VACATED WEST GROVE AND 8TH STREETS, BLOCK 22,
 B.C.O.T., SECTION 10, T.3N., R.2E., B.M., BOISE, ADA COUNTY, IDAHO

1998

4TH FLOOR

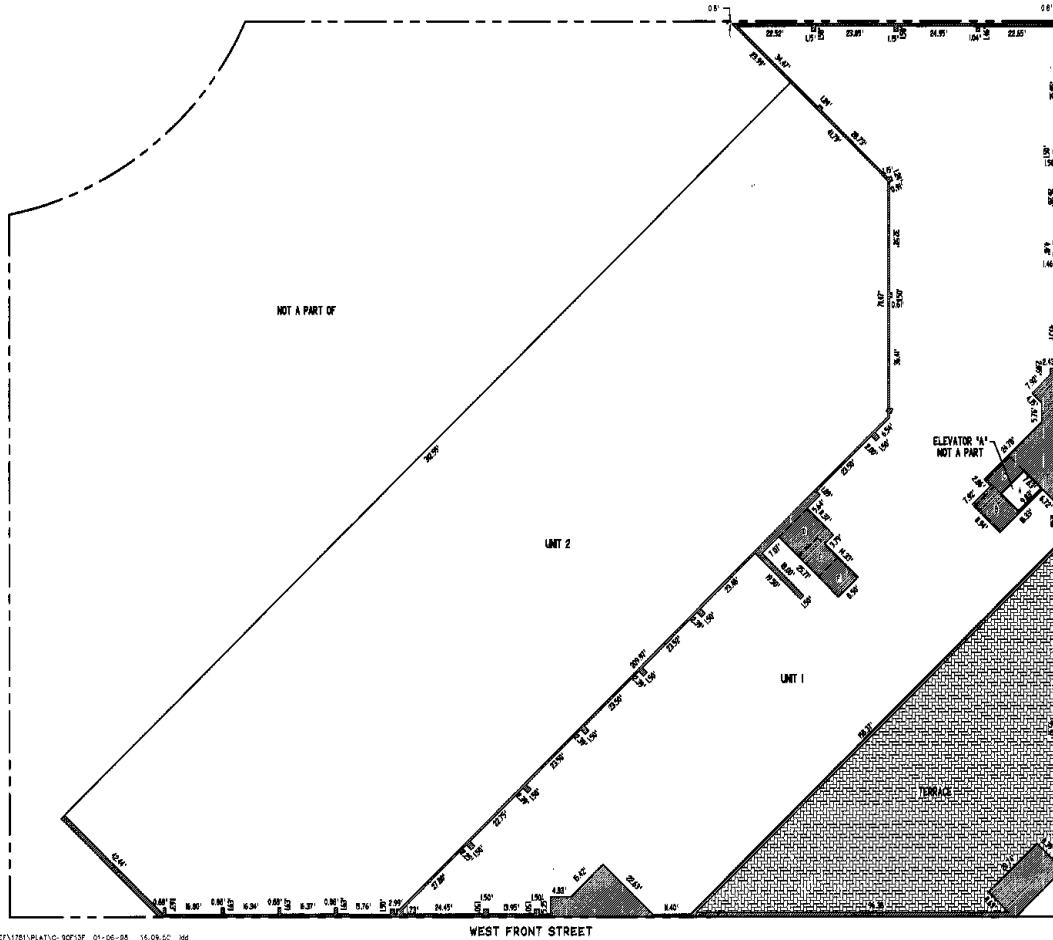
LEGEND

UNIT 1	UNIT NUMBER
---	LIMITS OF PARCEL 1
[Pattern]	COMMON AREA
[Pattern]	LIMITED COMMON AREA
A, B, C, D, E, F	ELEVATOR SHAFTS

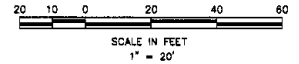


UNIT LEGEND

- UNIT 1 = HOTEL UNIT
- UNIT 2 = EVENT ARENA UNIT
- UNIT 3 = RESTAURANT AND BAR UNIT
- UNIT 4 = AUTOMOBILE PARKING GARAGE UNIT
- UNIT 5 = PENTHOUSE FLOOR UNIT



FINISHED FLOOR ELEVATION = 145.00



TEALEY'S LAND SURVEYING

109 S. 4th ST. BOISE, IDAHO
 208-385-0638

Job No. 1781 Sheet 9 of 13

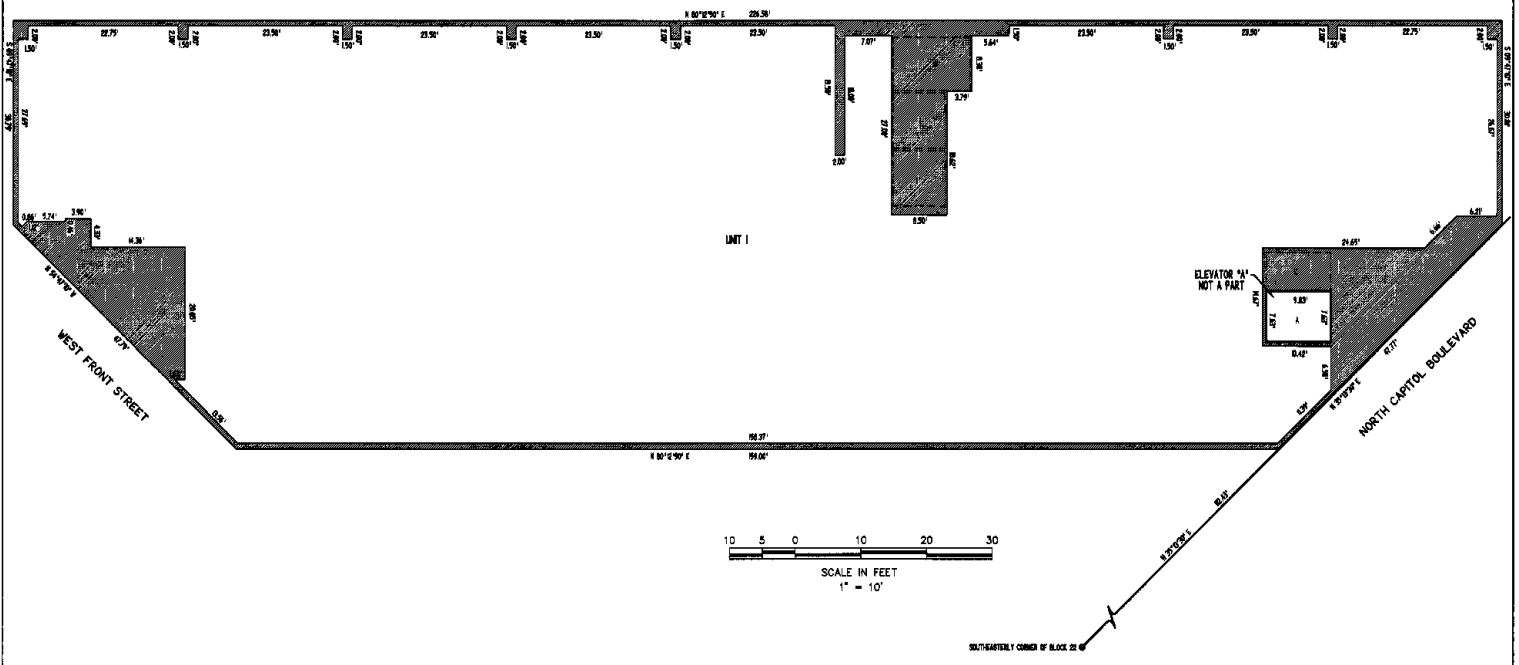
X:\17-1781\1781\PLAT1\0-202107 01-06-25 15:09:00 366

SK 75 19 7838

PLAT FOR
BLOCK TWENTY TWO CONDOMINIUMS
 A PORTION OF LOT 7, ALL OF LOTS 1-6 AND 8-12, VACATED ALLEY, PORTION OF VACATED WEST GROVE AND 8TH STREETS, BLOCK 22,
 B.C.O.T., SECTION 10, T.3N., R.2E., B.M., BOISE, ADA COUNTY, IDAHO
 1998
5th FLOOR

UNIT LEGEND
 UNIT 1 = HOTEL UNIT
 UNIT 2 = EVENT AREA UNIT
 UNIT 3 = RESTAURANT AND BAR UNIT
 UNIT 4 = AUTOMOBILE PARKING GARAGE UNIT
 UNIT 5 = PENTHOUSE FLOOR UNIT

LEGEND
 UNIT 1
 UNIT NUMBER
 LIMITS OF PARCEL 1
 COMMON AREA
 ELEVATOR SHAFTS
 A.B.C.D.E.F



TEALEY'S LAND SURVEYING
 108 S. 4th ST. BOISE, IDAHO 208-388-0036
 Job No. 1781 Sheet 10 of 13

sk75 pg 7837

PLAT FOR BLOCK TWENTY TWO CONDOMINIUMS

A PORTION OF LOT 7, ALL OF LOTS 1-6 AND 8-12, VACATED ALLEY, PORTION OF VACATED WEST GROVE AND 8TH STREETS, BLOCK 22,
B.C.O.T., SECTION 10, T.3N., R.2E., B.M., BOISE, ADA COUNTY, IDAHO

1998

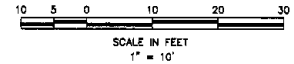
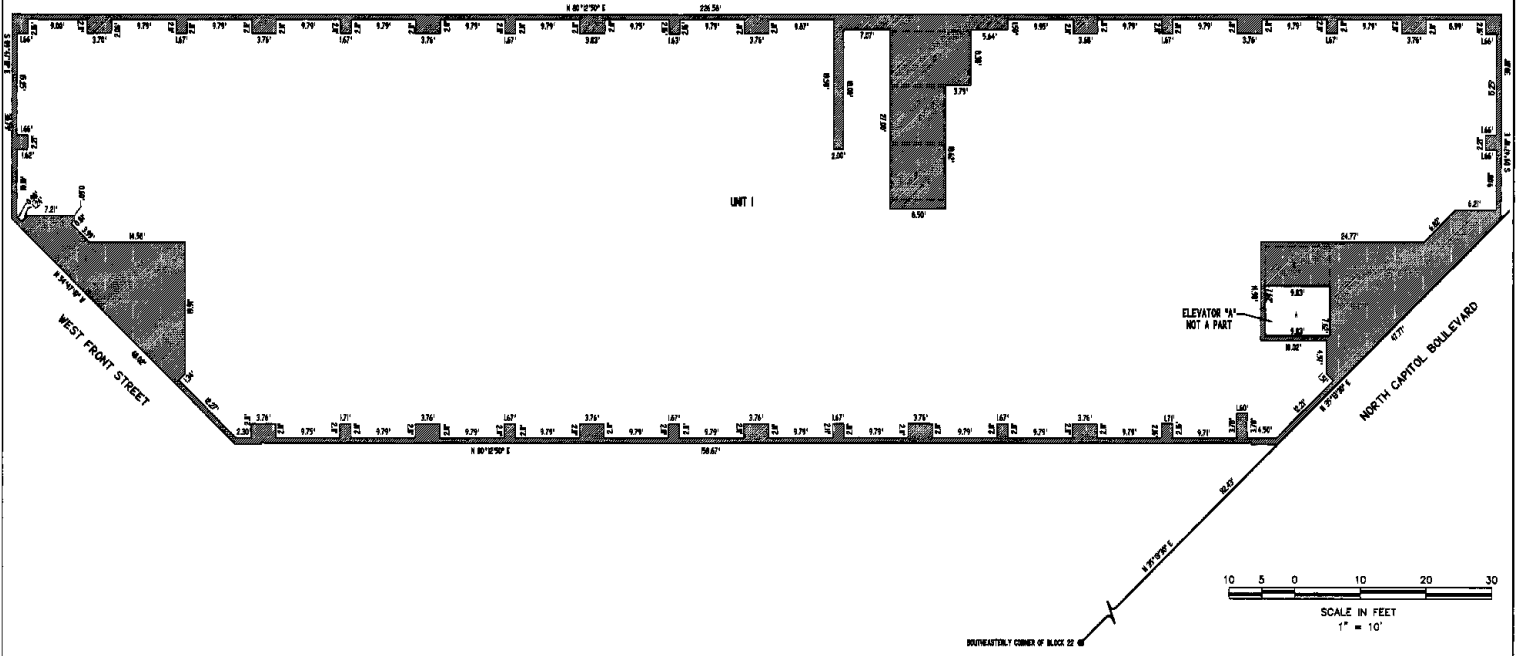
6TH THRU 13TH FLOOR

UNIT LEGEND

- UNIT 1 = HOTEL UNIT
- UNIT 2 = EVENT ARENA UNIT
- UNIT 3 = RESTAURANT AND BAR UNIT
- UNIT 4 = AUTOMOBILE PARKING GARAGE UNIT
- UNIT 5 = PENTHOUSE FLOOR UNIT

LEGEND

- UNIT 1
- UNIT NUMBER
- LIMITS OF PARCEL 1
- COMMON AREA
- ELEVATOR SHAFTS



TEALEY'S LAND SURVEYING

108 E. 4th ST. BOISE, IDAHO 208-385-0838

Job No. 1781 Sheet 11 of 13

K:\V-REF\1781\PLAT\0110713P 01-08-98 14 02 57 .DWG

