

TOPOGRAPHIC MAP

FOR CCDC
 LOTS 8-10, BLOCK 11, MCCARTHY'S 2ND ADDITION,
 BOOK 02 OF PLATS, PAGE 85, ADA COUNTY RECORDS.
 LYING WITHIN THE SE 1/4 OF THE SE 1/4 OF SECTION 4, T.3N., R.2E., B.M.
 BOISE CITY — COUNTY OF ADA — STATE OF IDAHO

BASIS OF BEARING

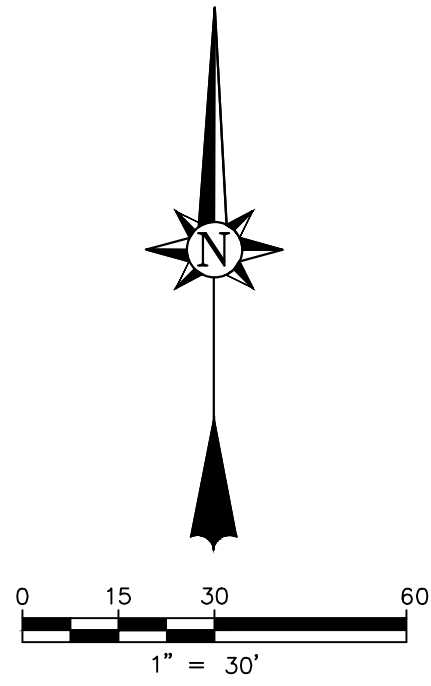
N 54°44'59" W BETWEEN FOUND MONUMENT AT
 THE INTERSECTION OF N. 17 ST. & W. IDAHO
 ST. AND THE FOUND MONUMENT AT THE
 INTERSECTION OF N. 18TH ST. & W. IDAHO ST.

REFERENCES

- R1 = MCCARTHY'S 2ND ADDITION
 BOOK 02 OF PLATS, PAGE 85
- R2 = RECORD OF SURVEY No. 11766
- R3 = RECORD OF SURVEY No. 10349

MAPPING NOTES

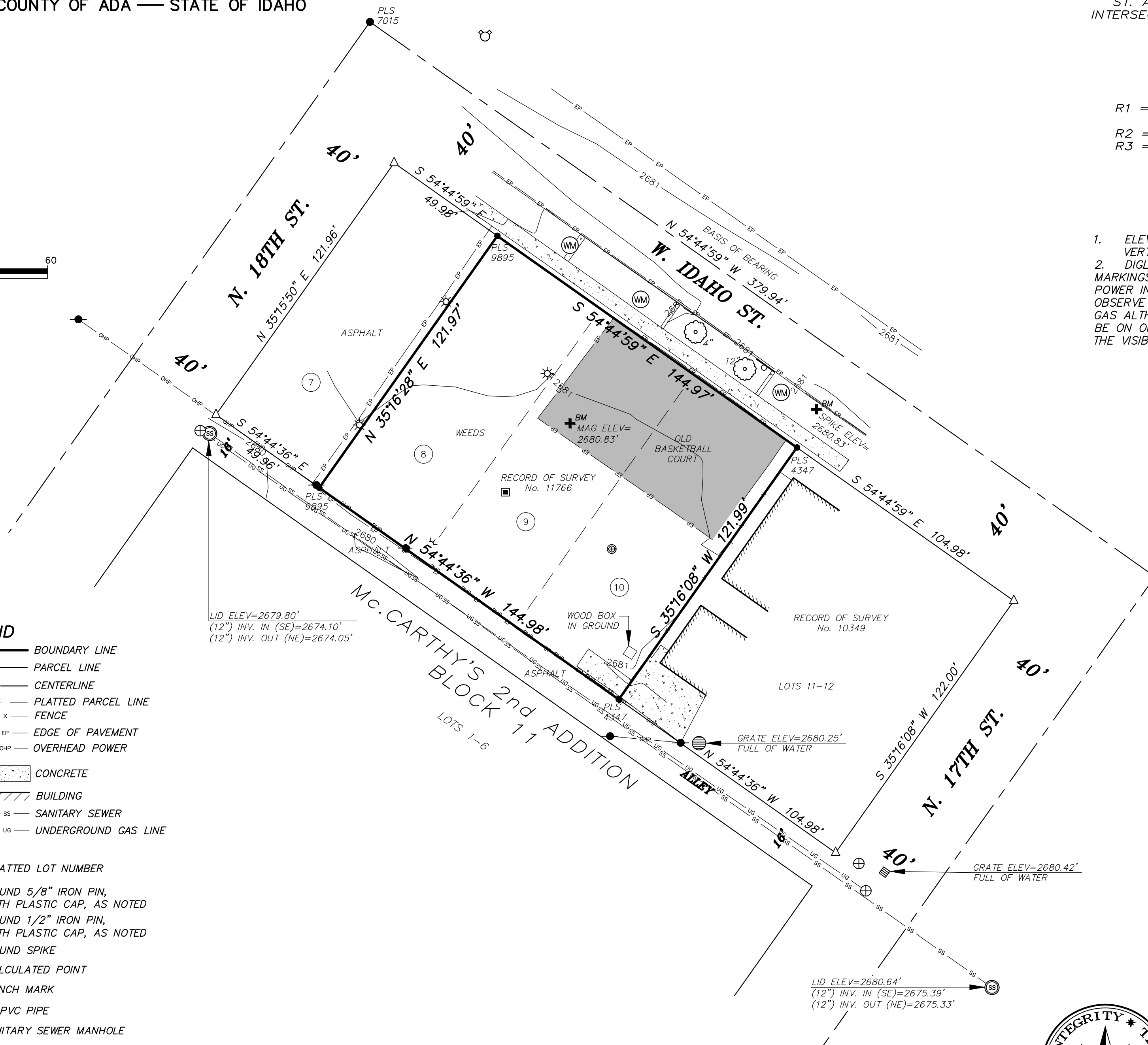
1. ELEVATIONS BASED ON NAVD 88
 VERTICAL DATUM.
2. DIGLINE REQUEST #2020211322. WE FOUND
 MARKINGS FROM CENTURY LINK AND IDAHO
 POWER INDICATING NO UTILITIES. WE DID NOT
 OBSERVE ANY MARKINGS FOR WATER, SEWER OR
 GAS ALTHOUGH WE PRESUME THESE UTILITIES TO
 BE ON OR NEAR THE SITE AND HAVE SHOWN
 THE VISIBLE UTILITY STRUCTURES HEREON.



LEGEND

	BOUNDARY LINE
	PARCEL LINE
	CENTERLINE
	PLATTED PARCEL LINE
	FENCE
	EDGE OF PAVEMENT
	OVERHEAD POWER
	CONCRETE
	BUILDING
	SANITARY SEWER
	UNDERGROUND GAS LINE

	WATER METER		PLATTED LOT NUMBER
	UTILITY POLE		FOUND 5/8" IRON PIN, WITH PLASTIC CAP, AS NOTED
	LIGHT POLE		FOUND 1/2" IRON PIN, WITH PLASTIC CAP, AS NOTED
	SIGN		FOUND SPIKE
	DECIDUOUS TREE		CALCULATED POINT
	FIRE HYDRANT		BENCH MARK
	METAL POST		2" PVC PIPE
	GAS VALVE		SANITARY SEWER MANHOLE
	DROP INLET		



Nathan J. Dang,
 P.L.S. 11463



**Accurate
 Surveying &
 Mapping**

1602 W. Hays St., Suite 306
 Boise, Idaho 83702
 (208) 488-4227

www accuratesurveyors.com

JOB NO. 20-187
DRAWN BY: SKR
SHEET: 1 OF 1