

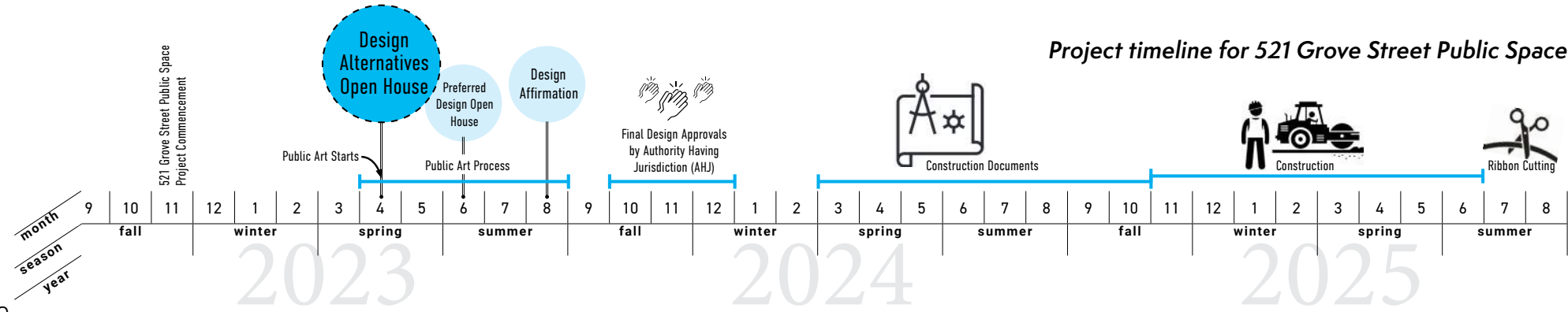
ABOUT THIS PROJECT - 521 W. GROVE STREET PUBLIC SPACE

521 W Grove Street is a 0.21 acre parcel, purchased by CCDC in January 2022 to create a public space that celebrates the multi-cultural aspects of the Old Boise neighborhood.

The new public space is envisioned by the Old Boise community to potentially provide an area where people can enjoy the outdoors, gather for community events and festivals, and learn about and connect with the multi-cultural and historic richness of one of Boise's oldest neighborhoods.

CCDC is leading the development of this public space in partnership with Boise Parks and Recreation, who will take over the long-term ownership upon completion.

CCDC is also working in partnership with the Boise City Department of Arts & History who will lead the public art process to create an art piece for the new public space.

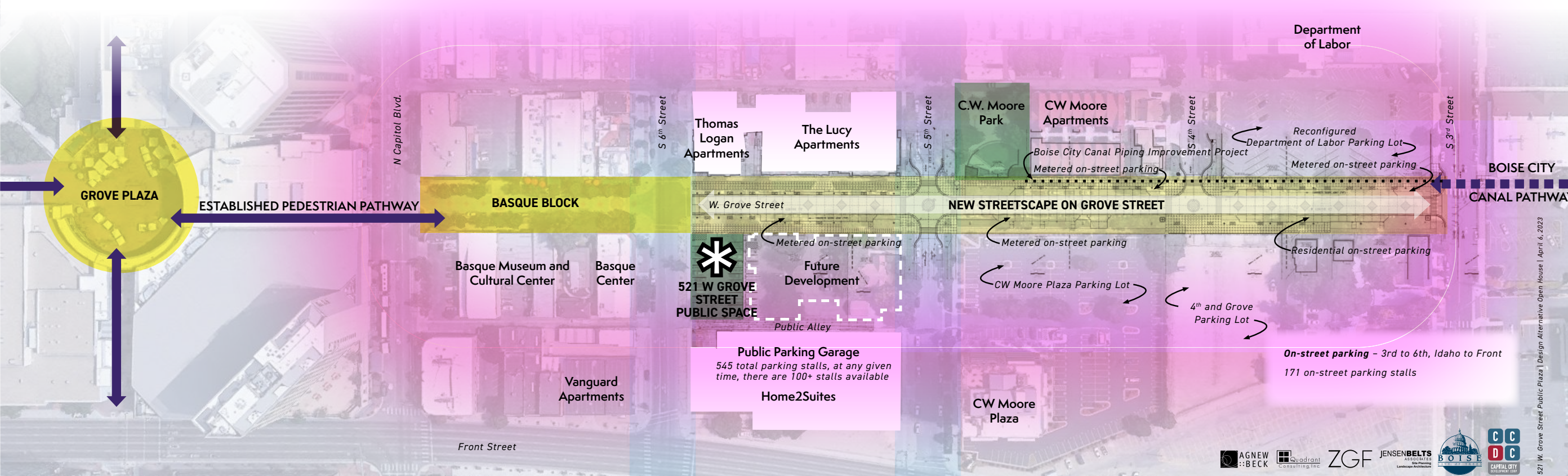
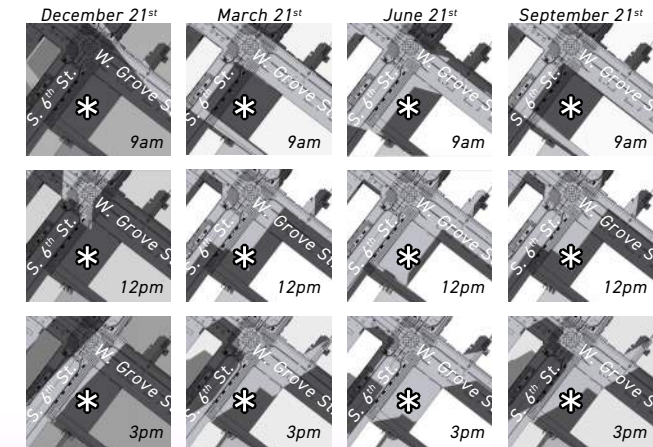


On S. 6th Street next to Parking Garage, looking northeast



At the intersection of 6th/Grove, looking southwest

Sun study of 521 Grove Street Public Space



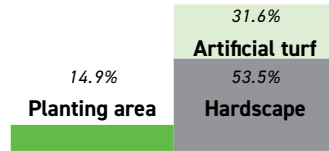
SITE DESIGN ALTERNATIVES: SIDE-BY-SIDE COMPARISON

In your opinion, which design alternative has the best layout and orientation to achieve the following?

- Celebrate the rich culture and history of the area
- Complement, not replicate the Basque Block
- Provide an interface with nature and greenery

- Create places to sit, gather, dine and converse
- Create memories with supported activities for all users
- Integrate public art that reflects the history and creates a beautiful sense of space

A



Medium*	Medium	✓	✓	✓	Medium*	Fixed	Vertical Panels
Public seating	Shade structure/ weather cover	Quiet contemplation space	Open plaza space	Vendor spaces for events and street festivals	Public dining areas	Small-scale 'main stage' area	Screening by Public Alley

General notes:

- Bicycle parking will be provided on Grove Street, within the public rights-of-way
- *Added movable furniture can increase seating and outdoor dining capacity

B

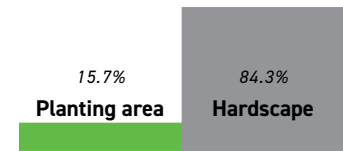


Most*	Most	✓	✓	✓	Medium*	Planned	Vertical Panels
Public seating	Shade structure/ weather cover	Quiet contemplation space	Open plaza space	Vendor spaces for events and street festivals	Public dining areas	Small-scale 'main stage' area	Screening by Public Alley

General notes:

- Bicycle parking will be provided on Grove Street, within the public rights-of-way
- *Added movable furniture can increase seating and outdoor dining capacity

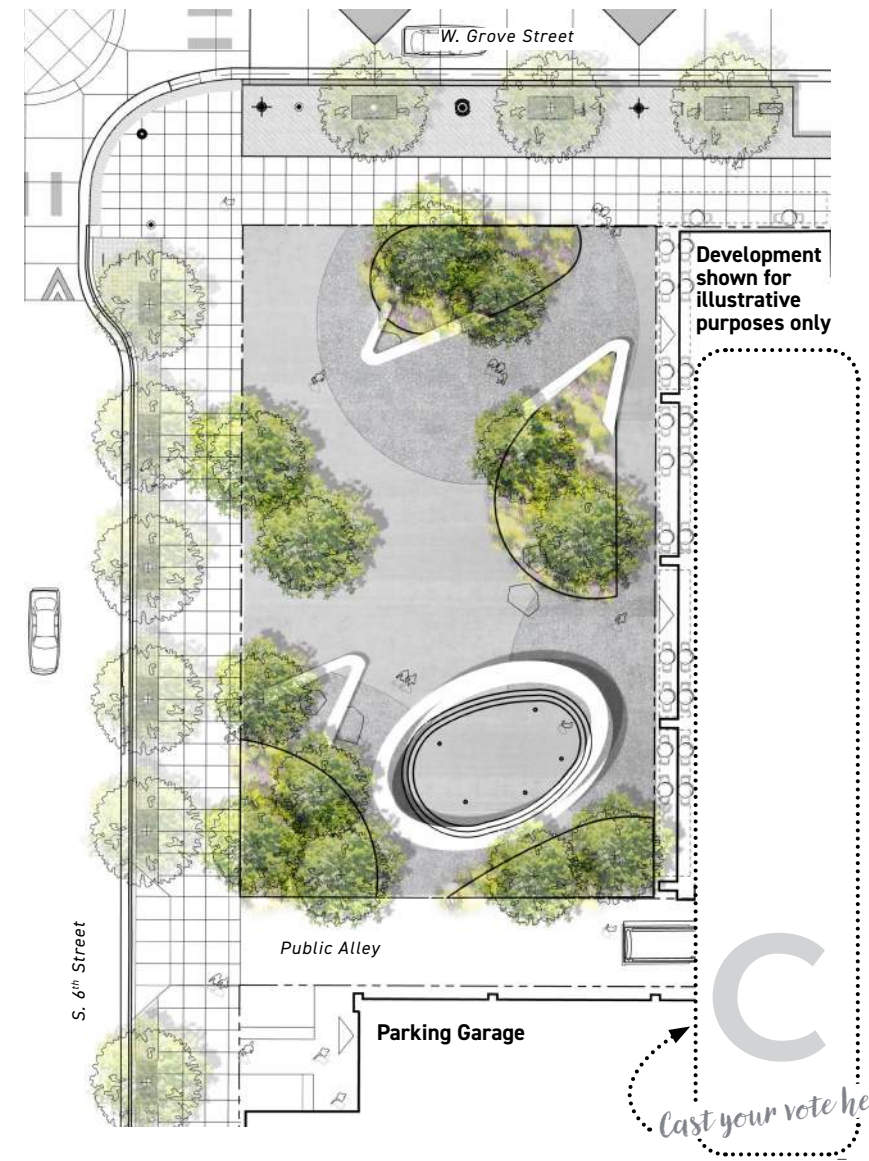
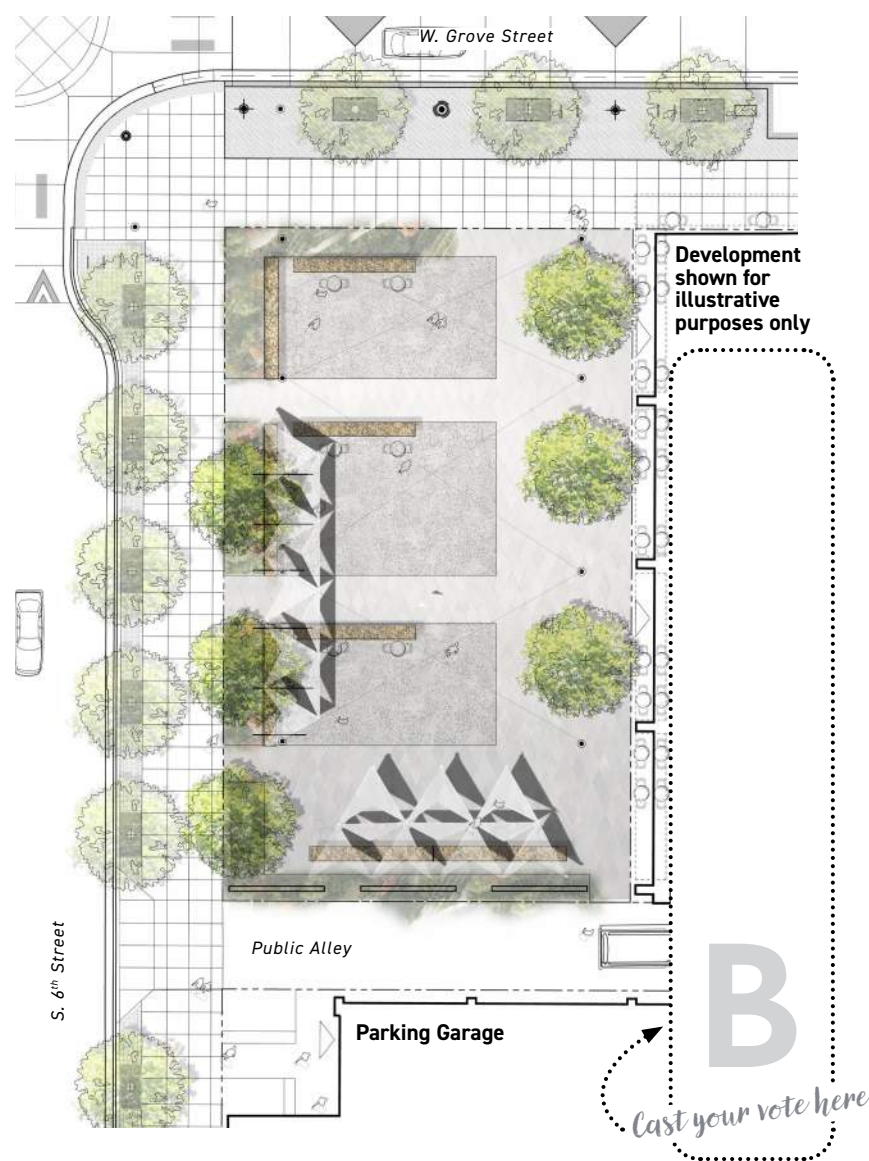
C



Least*	Low	✓	✓	✓	Most	Fixed	Planting
Public seating	Shade structure/ weather cover	Quiet contemplation space	Open plaza space	Vendor spaces for events and street festivals	Public dining areas	Small-scale 'main stage' area	Screening by Public Alley

General notes:

- Bicycle parking will be provided on Grove Street, within the public rights-of-way
- *Added movable furniture can increase seating and outdoor dining capacity



SITE ELEMENTS TO CONSIDER IN MATERIAL, FORM AND FUNCTION

Site elements are not created equal, which elements would you like to see in the Preferred Site Design phase and finally in this public space? Cast your vote below the images, one to two per category.

SEATING



OVERHEAD STRUCTURE



VERTICAL SCREEN



GROUND PLANE LANDSCAPE



PAVING MATERIAL



AMBIANCE



A SITE DESIGN ALTERNATIVE

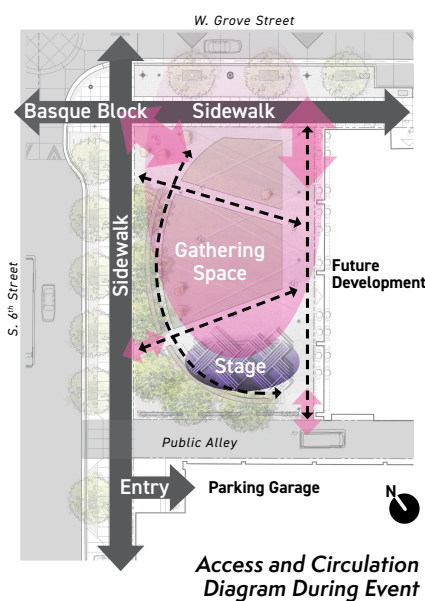
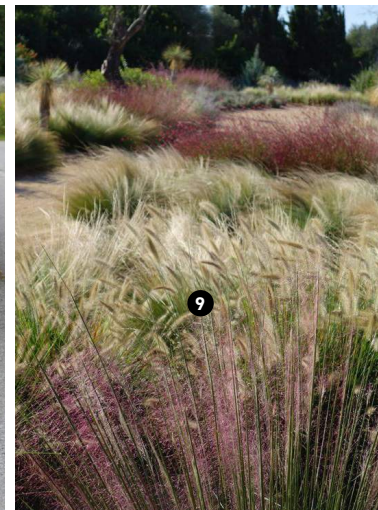
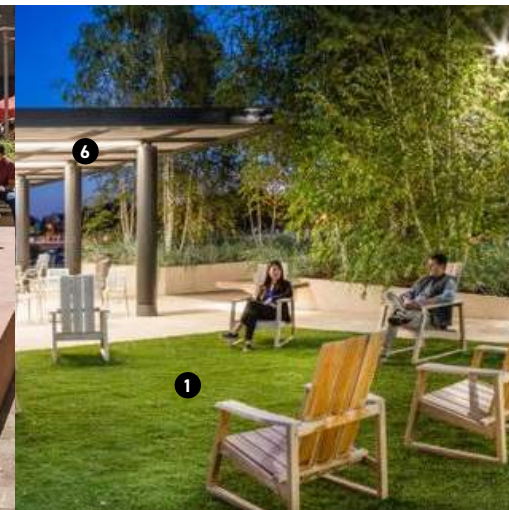
A SITE DESIGN ALTERNATIVE



11 View west from W. Grove Street



12 View east from public space off 6th Street



13 View south from Grove/6th intersection



B SITE DESIGN ALTERNATIVE



W. Grove Street Sidewalk

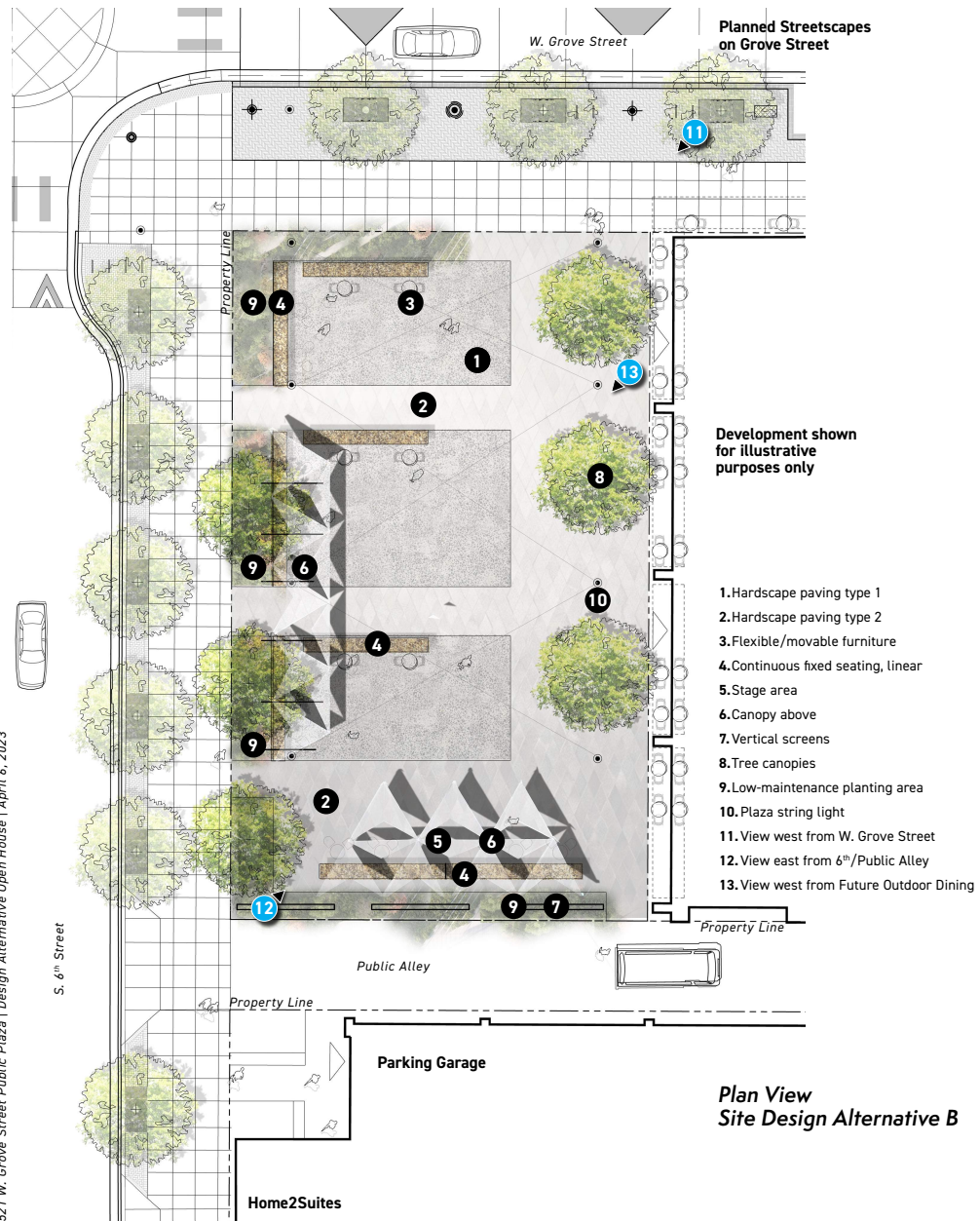
11 View west from W. Grove Street



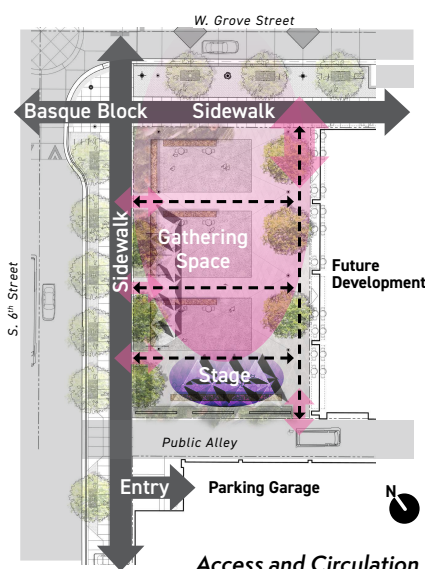
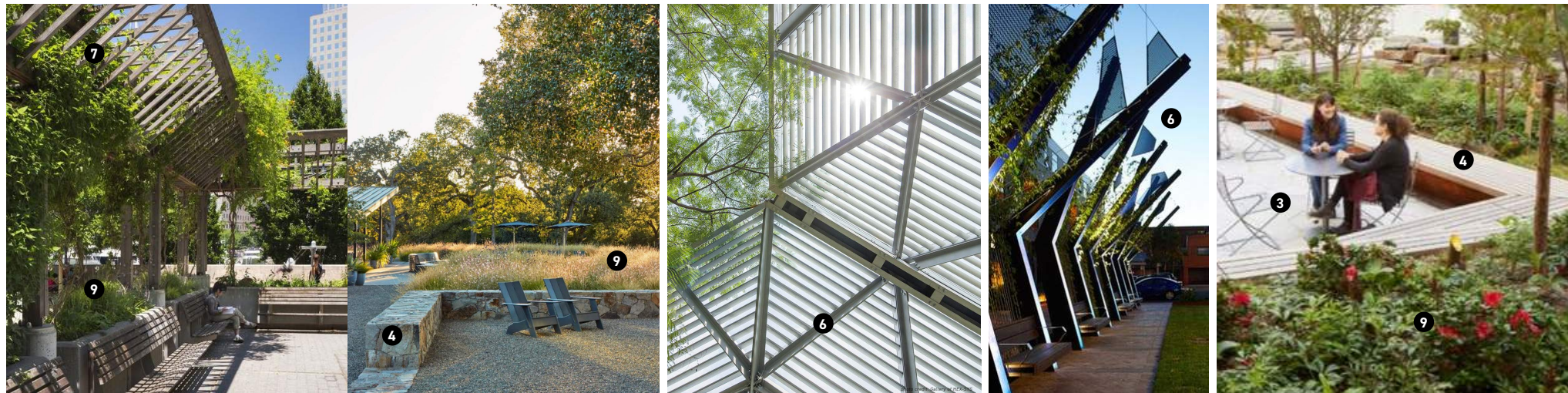
12 View east from 6th/Public Alley



B SITE DESIGN ALTERNATIVE



Plan View Site Design Alternative B



Access and Circulation Diagram During Event



13 View south from Grove/6th intersection

C SITE DESIGN ALTERNATIVE



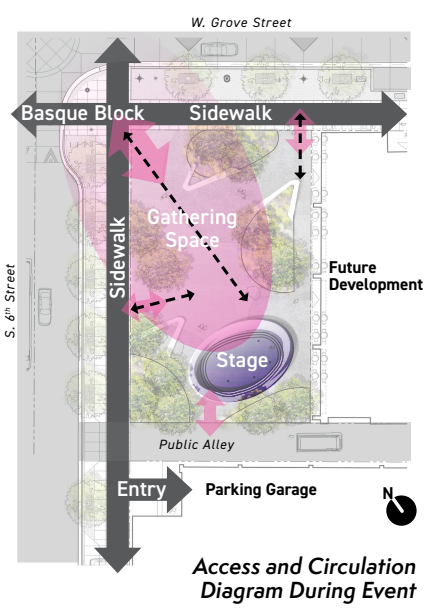
9 View west from W. Grove Street



10 View east from public space off 6th Street



C SITE DESIGN ALTERNATIVE



11 View south from Grove/6th intersection

