

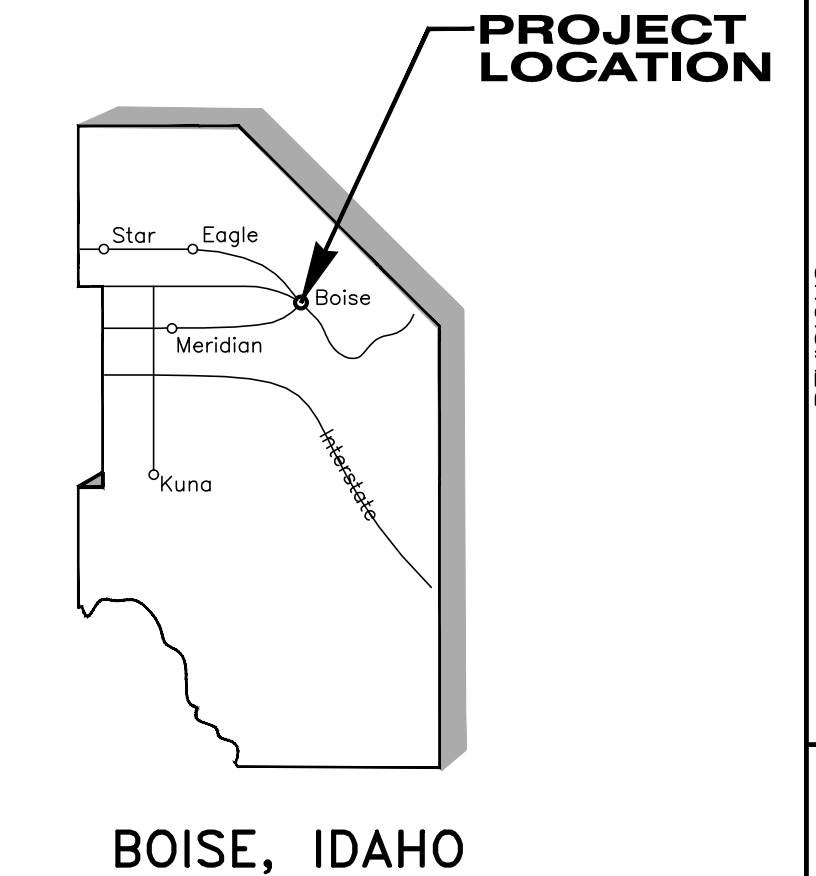
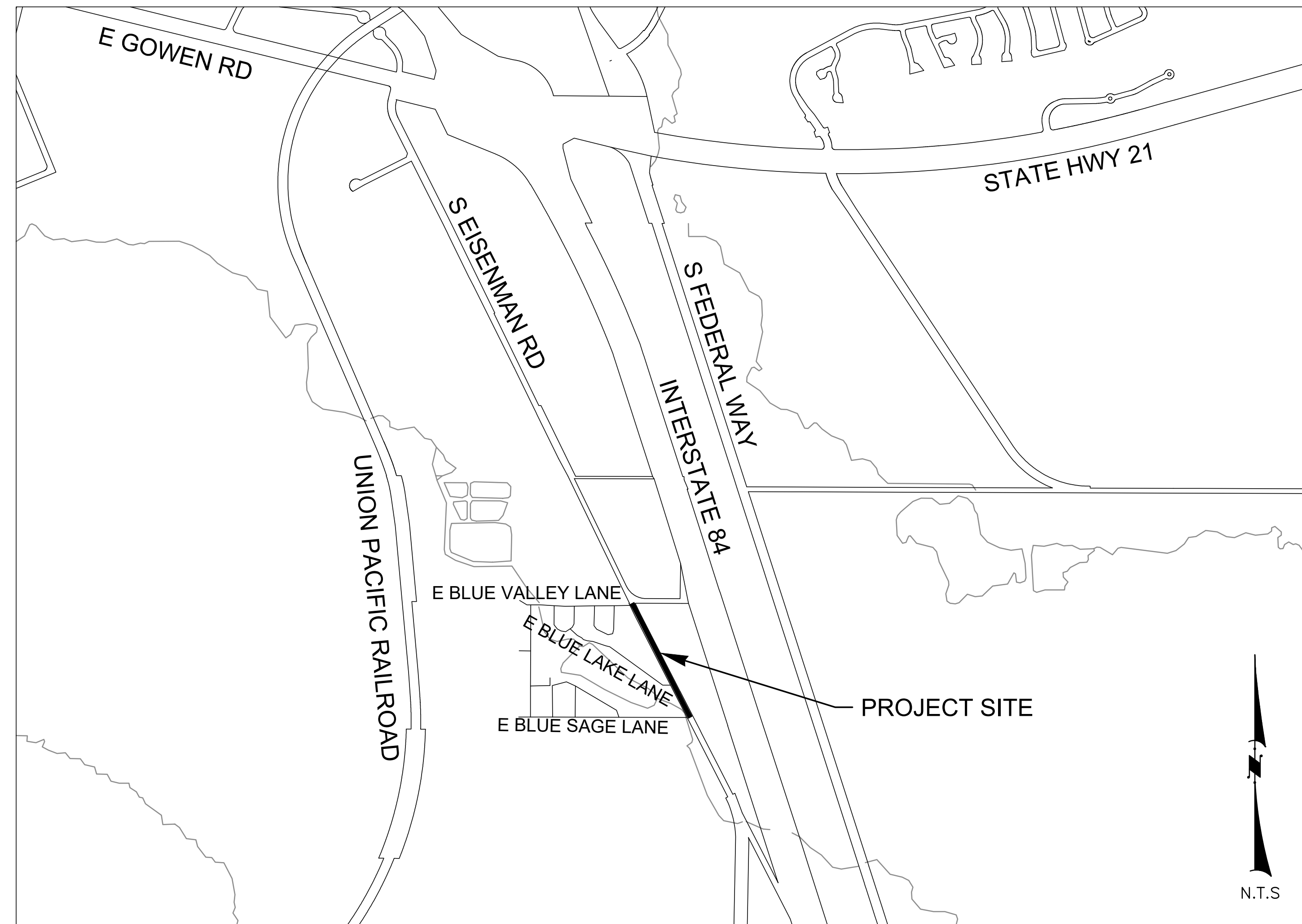
CAPITAL CITY DEVELOPMENT CORPORATION CONSTRUCTION PLANS

FOR EISENMAN ROAD PEDESTRIAN FACILITIES JULY 2023

LEGEND

(See Standards For Specifics)

2+00	3+00	Control Line				
EP	EG	Existing Edge of Pavement or Gravel				
12" CMP		Existing Drain or Irrigation Pipe				
		Existing Ditch or Flow line				
PL		Existing Property Line				
X	X	Existing Fence & Gate				
	Top	Existing Slope				
	Bottom	Existing Curb & Gutter				
		Existing Concrete Sidewalk				
FO	P	W	G	T	TV	Existing Curb, Gutter, Sidewalk & Approach
						Existing Utility Line With Initial
⊙						Water Valve or Meter
⊙						Gas Valve or Meter
⊙						Fire Hydrant
⊙						Signal Pole
⊙						Light Pole
⊙						Utility Pole With Anchor
⊙						Sign, Stop/Street Sign and Mailbox
⊙						Existing & New Manholes
⊙						Existing & New Catch Basin
⊙						Existing & New Irrigation Box
⊙						Deciduous & Evergreen Tree
⊙						Deciduous & Evergreen Bushes
⊙						Existing Building
⊙						River, Creek, or Canal
⊙						Revision Note
⊙						Construction Note
⊙						Bench Mark & Monument
10	11	15	14			Section & 1/4 Section Corner
						New Asphalt Path
						New Asphalt Shoulder
						Sod Repair
						Asphalt Repair
						Gravel Repair
						New Extruded Curb
						New Retaining Wall
						New 4" White Stripe
						Limits of Cut Slope
						Limits of Fill Slope



SHEET INDEX

- TITLE SHEET
- TYPICAL SECTIONS, DETAILS & NOTES
- 5. PATHWAY PLAN & PROFILE
- RETAINING WALL PLAN & PROFILE
- RETAINING WALL NOTES & DETAILS
- 9. RETAINING WALL RAILING NOTES & DETAILS



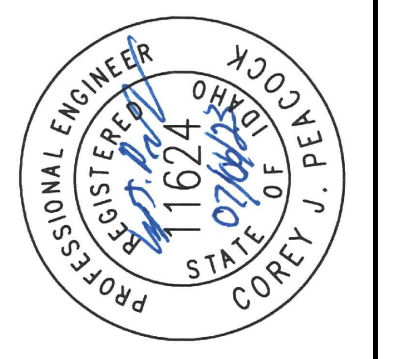
CLIENT:
CAPITAL CITY DEVELOPMENT CORPORATION
CONTACT: KASSI BROWN
121 N. 9TH STREET, SUITE #501
BOISE, IDAHO 83702
(208)384-4264

Plans Are Accepted For Public Street Construction

By stamping and signing the improvement plans, the Registered Engineer ensures the District that the plans conform to all District policies and standards. Variances or waivers must be specifically and previously approved by the District in writing. Acceptance of the improvement plans by the District does not relieve the Registered Engineer of these responsibilities.

BY: *[Signature]* DATE: 08/10/2023
ADA COUNTY HIGHWAY DISTRICT

NOTE: COORDINATES SHOWN WERE ESTABLISHED FROM THE NAD 83 IDAHO STATE PLANE MODIFIED TO THE ADA COUNTY LOCAL GIS COORDINATES. ALL ELEVATIONS ARE BASED ON THE NAVD 88 DATUM. CONTRACTOR SHALL BE RESPONSIBLE FOR HAVING AN IDAHO P.L.S. REFERENCE AND REPLACE ALL DISTURBED LAND MONUMENTS.

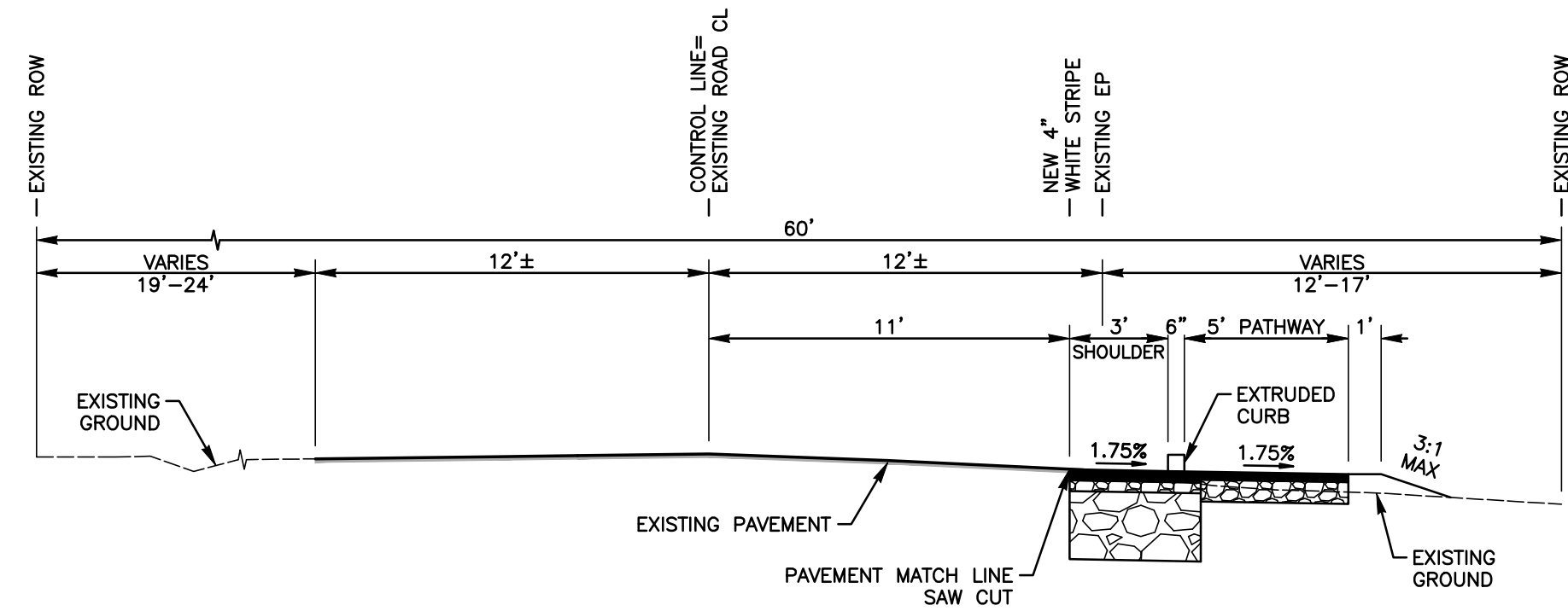


PROJECT NO.	DESIGNED	DRAWN	CHECKED	APPROVED
22018	CJP/JUP	JUP	JUP	CJP

CIVIL SURVEY CONSULTANTS, INC.
CONSULTING ENGINEERS AND LAND SURVEYORS
2893 S. MERIDIAN ROAD
MERIDIAN, IDAHO 83642
(208)988-4312

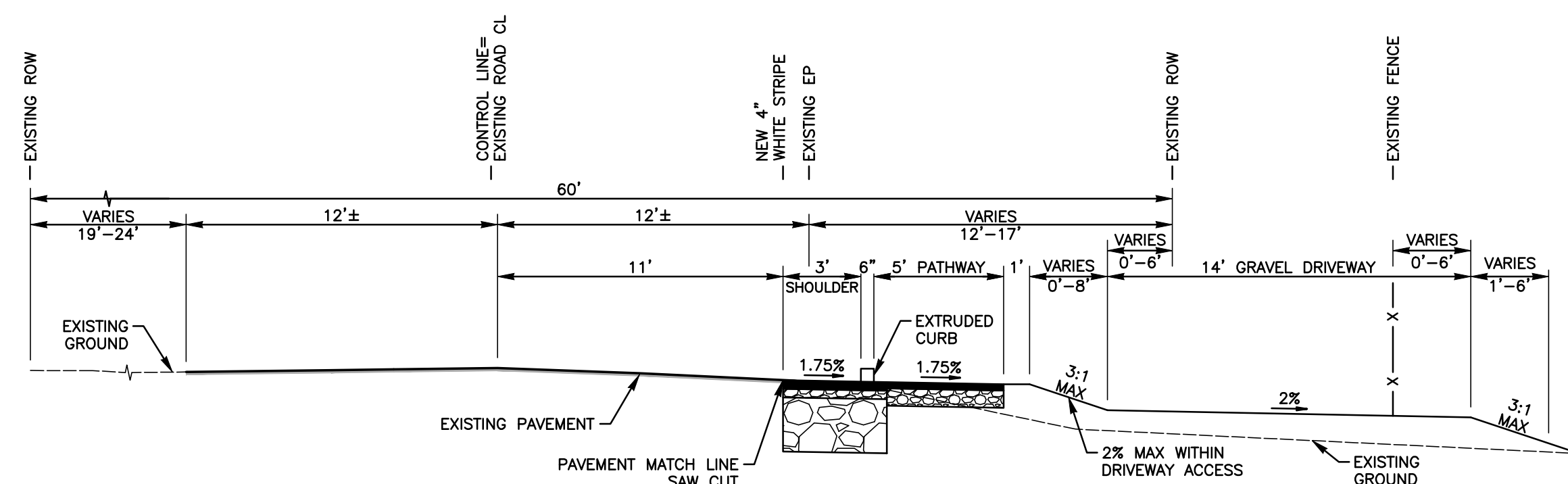
CAPITAL CITY
DEVELOPMENT CORPORATION
EISENMAN ROAD PEDESTRIAN FACILITIES
TITLE SHEET

DATE: JULY 2023
DRAWING: SHEET01.DWG
JOB NO: 22018



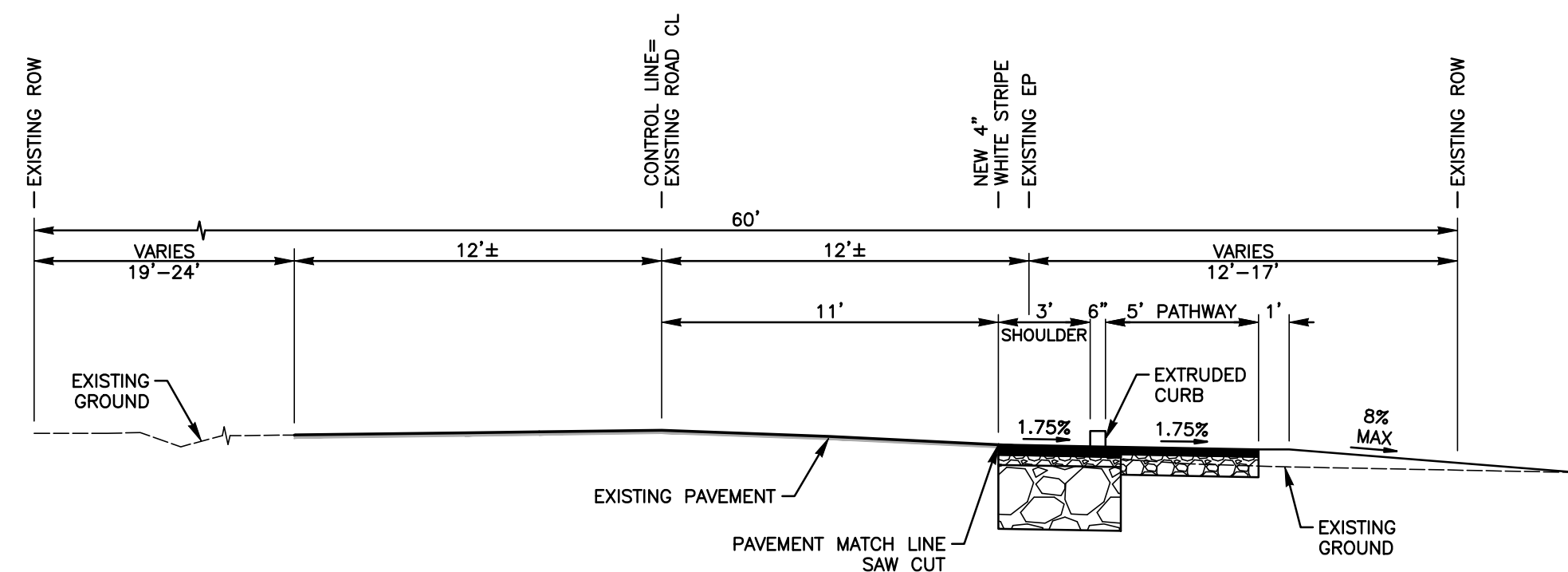
TYPICAL SECTION
STATIONS 21+60 TO 22+19, 22+96 TO 23+38, 24+15 TO 25+40.84,
26+58.65 TO 30+52.72, 30+90.13 TO 33+11.62

SCALE: 1"=5'



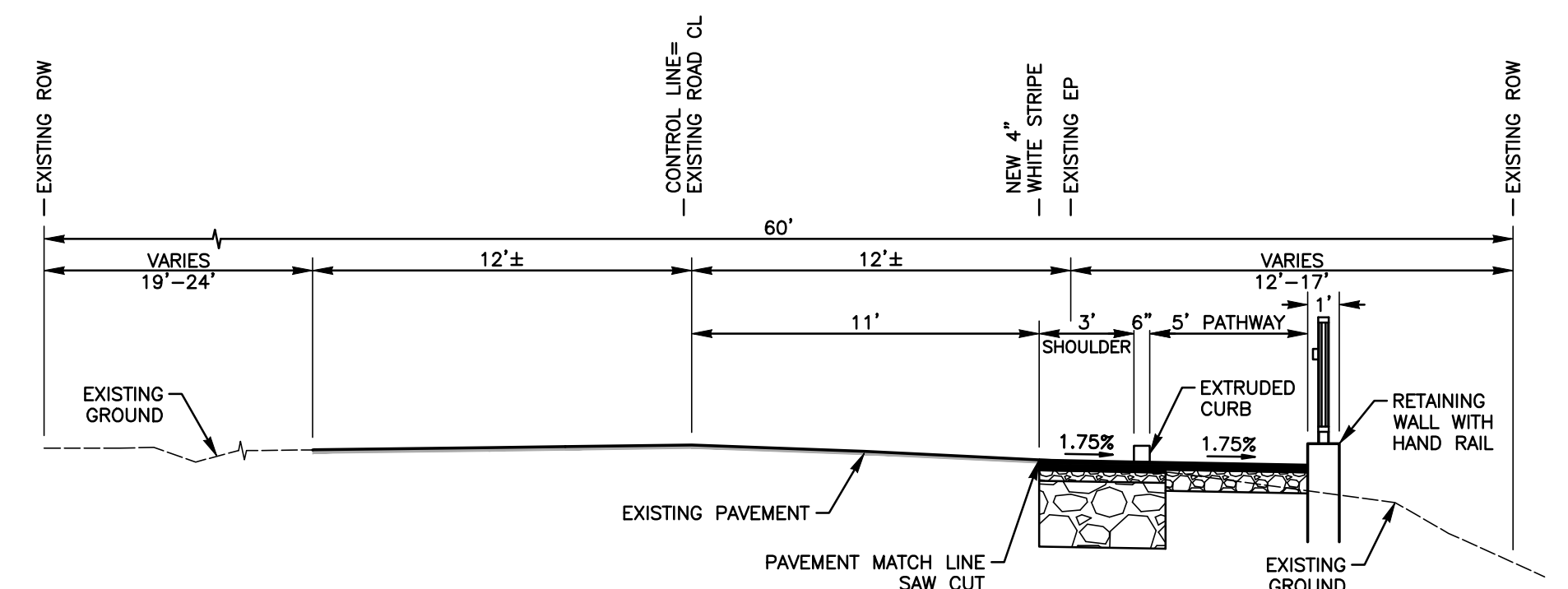
TYPICAL SECTION
STATION 25+40.84 TO 26+58.65

SCALE: 1"=5'



TYPICAL SECTION
STATIONS 22+19 TO 22+96, 23+38 TO 24+15

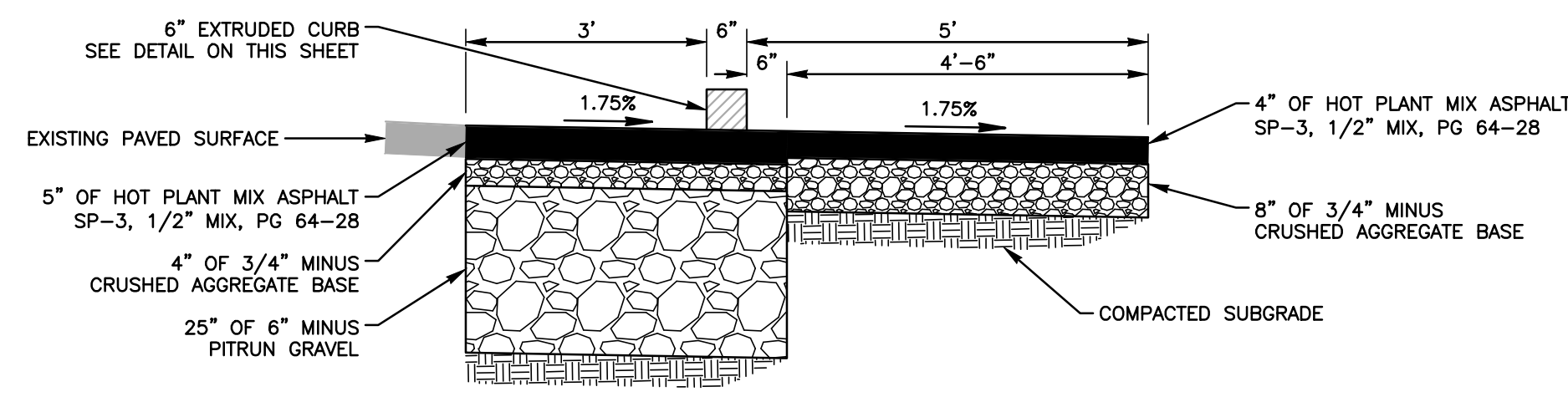
SCALE: 1"=5'



TYPICAL SECTION
STATION 33+11.62 TO 34+26.79

SCALE: 1"=5'

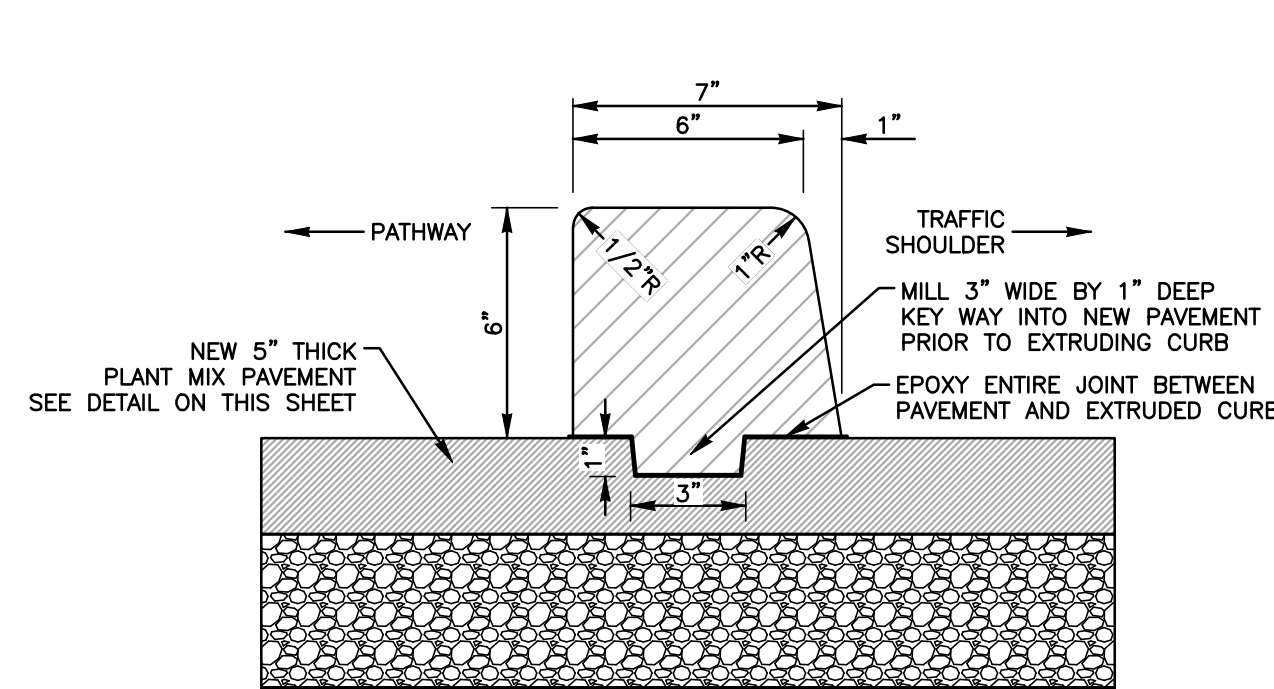
NOTE: 6" VERTICAL CURB BEHIND PATHWAY STARTING AT STATION 34+11.74. RETAINING WALL VARIES BETWEEN 0 AND 7 FEET BEHIND PATHWAY STARTING AT 34+11.74.



PAVED SHOULDER AND PEDESTRIAN PATHWAY

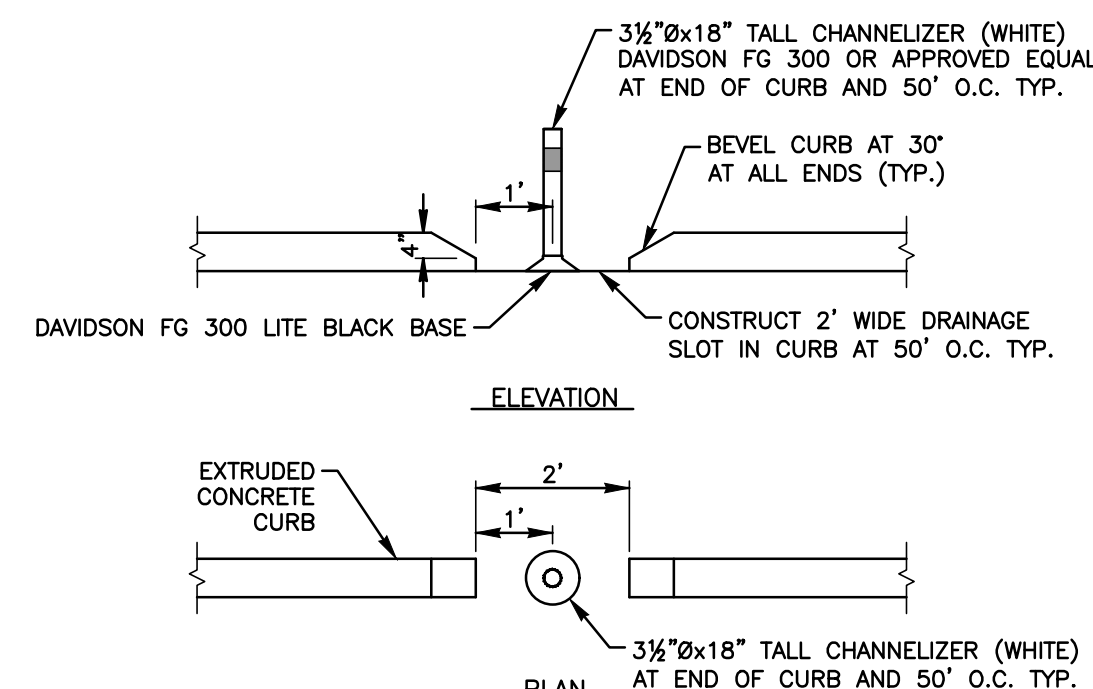
SCALE: 1"=2'

NOTE: THE AMERICANS WITH DISABILITIES ACT (ADA) STANDARDS DO NOT ALLOW FOR PATHWAY GROSS SLOPES THAT EXCEED 2.0%. NO TOLERANCES WILL BE ALLOWED.



EXTRUDED CONCRETE CURB

SCALE: NONE



CHANNELIZER AT CURB CUT DETAIL

SCALE: NONE

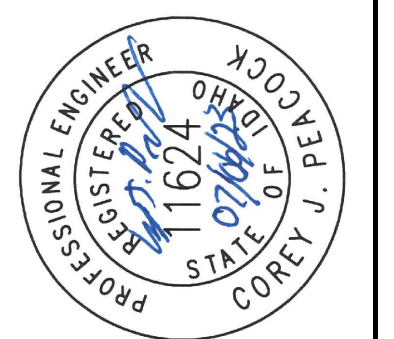
GENERAL NOTES

- ALL WORK SHALL BE DONE IN ACCORDANCE WITH THE REQUIREMENTS OF THE CURRENT EDITION OF THE IDAHO STANDARDS FOR PUBLIC WORKS CONSTRUCTION (ISPWC) AND THE REQUIREMENTS OF THE ADA COUNTY HIGHWAY DISTRICT (ACHD).
- ALL CONTRACTORS AND SUBCONTRACTORS SHALL BE REQUIRED TO ATTEND A PRECONSTRUCTION MEETING PRIOR TO STARTING WORK.
- ALL CONTRACTORS AND SUBCONTRACTORS WORKING WITHIN THE PROJECT ARE RESPONSIBLE FOR COMPLIANCE WITH ALL APPLICABLE SAFETY LAWS. THE CONTRACTOR SHALL BE RESPONSIBLE FOR ALL BARRICADES, SAFETY DEVICES AND CONTROL OF TRAFFIC WITHIN AND AROUND THE CONSTRUCTION AREA.
- ALL MATERIALS FURNISHED ON OR FOR THE PROJECT SHALL MEET THE MINIMUM REQUIREMENTS OF THE ISPWC AND ACHD, OR AS SET FORTH HEREIN, WHICHEVER IS MORE RESTRICTIVE. CONTRACTOR SHALL PROVIDE MATERIAL SUBMITTALS SHOWING COMPLIANCE, TO THE PROJECT OWNER FOR APPROVAL PRIOR TO STARTING WORK.
- CONTRACTOR SHALL PROVIDE TESTING OF ALL MATERIALS BY AN INDEPENDENT THIRD-PARTY TESTING FIRM. A COPY OF ALL TEST RESULTS SHALL BE PROVIDED TO PROJECT OWNER.
- THE CONTRACTOR IS RESPONSIBLE FOR COMPLIANCE WITH THE CLEAN WATER ACT AS IT RELATES TO STORM WATER RUNOFF FROM CONSTRUCTION ACTIVITIES. THE CONTRACTOR SHALL PREPARE AND FILE ALL NOI'S AND STORM WATER POLLUTION PREVENTION PLANS AS REQUIRED FOR THE PROJECT.
- THE LOCATION OF EXISTING UTILITIES ARE SHOWN IN AN APPROXIMATE WAY ONLY. THE CONTRACTOR SHALL DETERMINE THE EXACT LOCATION OF ALL EXISTING UTILITIES BEFORE STARTING CONSTRUCTION. THE CONTRACTOR SHALL BE FULLY RESPONSIBLE FOR ANY DAMAGES WHICH ARE THE RESULT OF THEIR FAILURE TO LOCATE AND PROTECT ALL EXISTING UTILITIES. THE CONTRACTOR SHALL CALL DIG LINE AT LEAST 48 HOURS PRIOR TO CONSTRUCTION FOR UTILITY LOCATIONS.
- ALL CONTRACTORS WORKING WITHIN THE PUBLIC ROAD RIGHT-OF-WAY ARE REQUIRED TO SECURE A RIGHT-OF-WAY CONSTRUCTION PERMIT FROM ACHD AT LEAST 24 HOURS PRIOR TO ANY CONSTRUCTION.
- ACHD WILL INSPECT ALL WORK WITHIN THE PUBLIC RIGHT-OF-WAY TO INCLUDE UTILITY TRENCHES ABOVE THE PIPE ZONE.
- THE ENGINEER OF RECORD CERTIFIES THAT THE PLANS ARE PREPARED IN SUBSTANTIAL CONFORMANCE WITH THE ACHD POLICY AND STANDARDS IN EFFECT AT THE TIME OF PREPARATION. THE ENGINEER ACKNOWLEDGES THAT ACHD ASSUMES NO LIABILITY FOR ERRORS OR DEFICIENCIES IN THE DESIGN. ALL VARIANCES FROM ACHD POLICY SHALL BE APPROVED IN WRITING.

Plans Are Accepted For Public Street Construction

By stamping and signing the improvement plans, the Registered Engineer ensures the District that the plans conform to all District policies and standards. Variances or waivers must be specifically and previously approved by the District in writing. Acceptance of the improvement plans by the District does not relieve the Registered Engineer of these responsibilities.

BY *MW* DATE: 08/10/2023
ADA COUNTY HIGHWAY DISTRICT



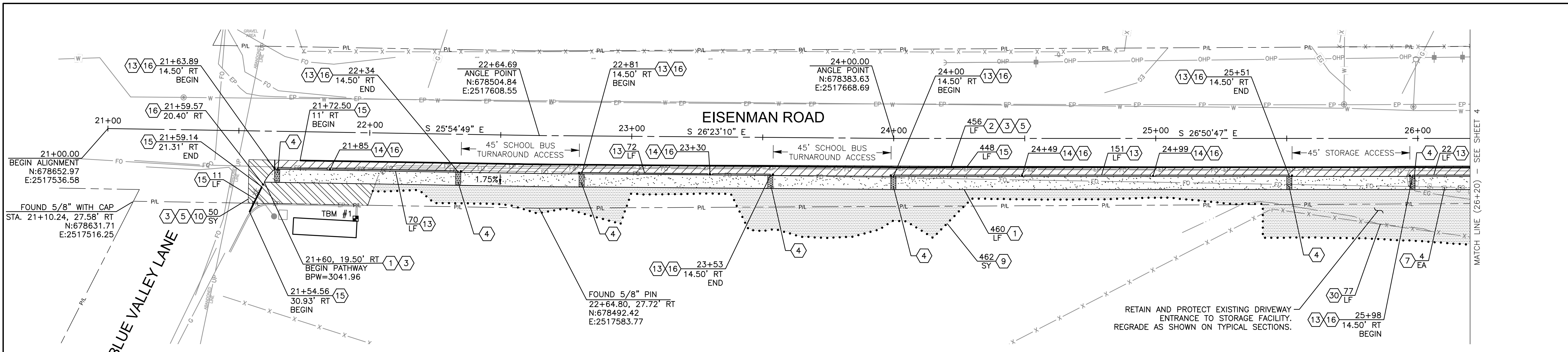
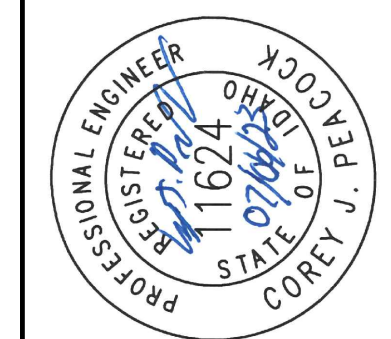
PROJECT NO.	22018
DESIGNED	CJP/JUP
DRAWN	JUP
CHECKED	STATE
DATE	
REVISIONS	
ITEM	

CIVIL SURVEY CONSULTANTS, INC.
CONSULTING ENGINEERS AND LAND SURVEYORS

2893 S. MERIDIAN ROAD
MERIDIAN, IDAHO 83642
(208)988-4312

CAPITAL CITY
DEVELOPMENT CORPORATION
EISENMAN ROAD PEDESTRIAN FACILITIES
TYPICAL SECTIONS, DETAILS & NOTES

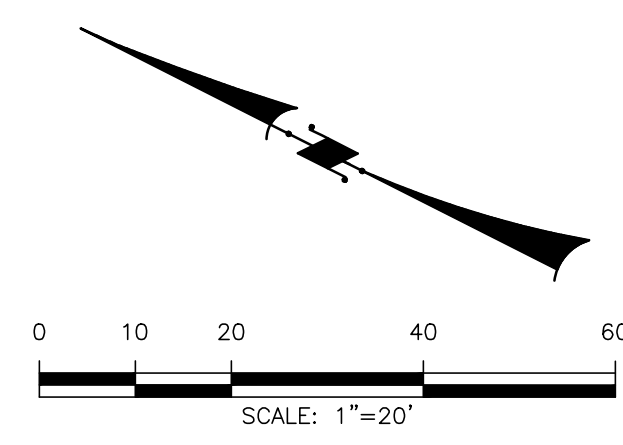
DATE: JULY 2023
DRAWING: SHEET02.DWG
JOB NO: 22018



NOTES

- ① 5' ASPHALT PEDESTRIAN PATHWAY PER DETAIL ON SHEET 2.
- ② 3' ASPHALT SHOULDER PER DETAIL ON SHEET 2.
- ③ MATCH EXISTING.
- ④ DETECTABLE WARNING DOMES PER SD-712 (ACHD SUPP. TO ISPWC), INCIDENTAL TO PROJECT.
- ⑤ SAW CUT NEAT MATCH LINE, INCIDENTAL TO PROJECT.
- ⑦ RELOCATE ROCKS ON PROPERTY PER PROPERTY OWNER, ITEM 201.4.1.C.1.
- ⑨ TYPE C SURFACE RESTORATION (GRAVEL), ITEM 307.4.1.E.1.
- ⑩ TYPE P SURFACE RESTORATION (ASPHALT) PER SD-303 (ACHD SUPP. TO ISPWC) AND PAVED SHOULDER DETAIL ON SHEET 2, ITEM 307.4.1.G.1.
- ⑬ EXTRUDED CONCRETE CURB PER DETAIL ON SHEET 2, ITEM 706.4.1.A.13.
- ⑭ 2' CURB CUT PER DETAIL ON SHEET 2, INCIDENTAL TO ITEM 706.4.1.A.13.
- ⑮ 4" WHITE PAVEMENT LINE PAINT, ITEM 1104.4.1.A.1.
- ⑯ CHANNELIZER (WHITE) PER DETAIL ON SHEET 2, ITEM 1104.4.1.C.1.
- ⑳ REMOVE AND RESET FENCE, ITEM 2040.4.1.A.1.

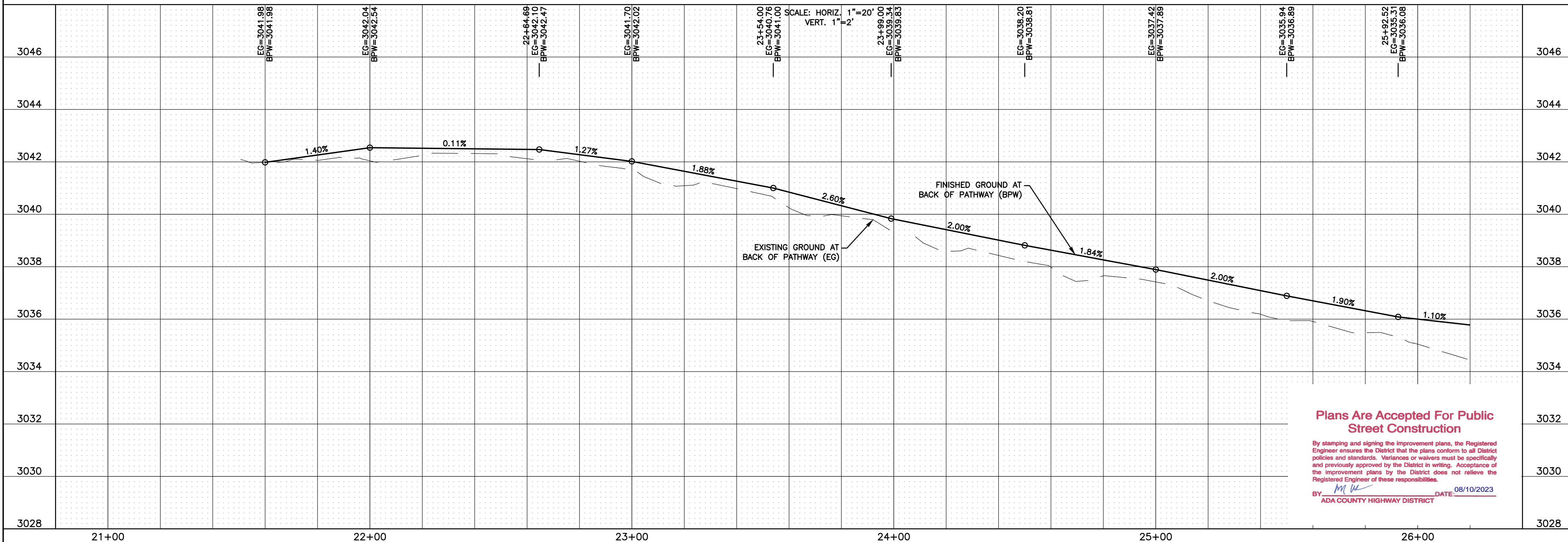
*CONTRACTOR SHALL MAINTAIN EXISTING DRAINAGE PATTERNS AT ROADWAY INTERSECTIONS. ADJUST TYPE P SURFACE (ASPHALT) RESTORATION LIMITS IF NECESSARY TO MAINTAIN DRAINAGE PATTERNS.



NOTE: STATIONING IS ALONG CENTER OF ROADWAY (DOUBLE YELLOW STRIPE).

BENCHMARKS

TBM #1 - CHISELED BOX AT TBC
 STA. 21+95.11, 32.86' RT
 ELEV.=3042.00
 DATUM: NAVD 88



Plans Are Accepted For Public Street Construction

By stamping and signing the improvement plans, the Registered Engineer ensures the District that the plans conform to all District policies and standards. Variances or waivers must be specifically and previously approved by the District in writing. Acceptance of the improvement plans by the District does not relieve the Registered Engineer of these responsibilities.

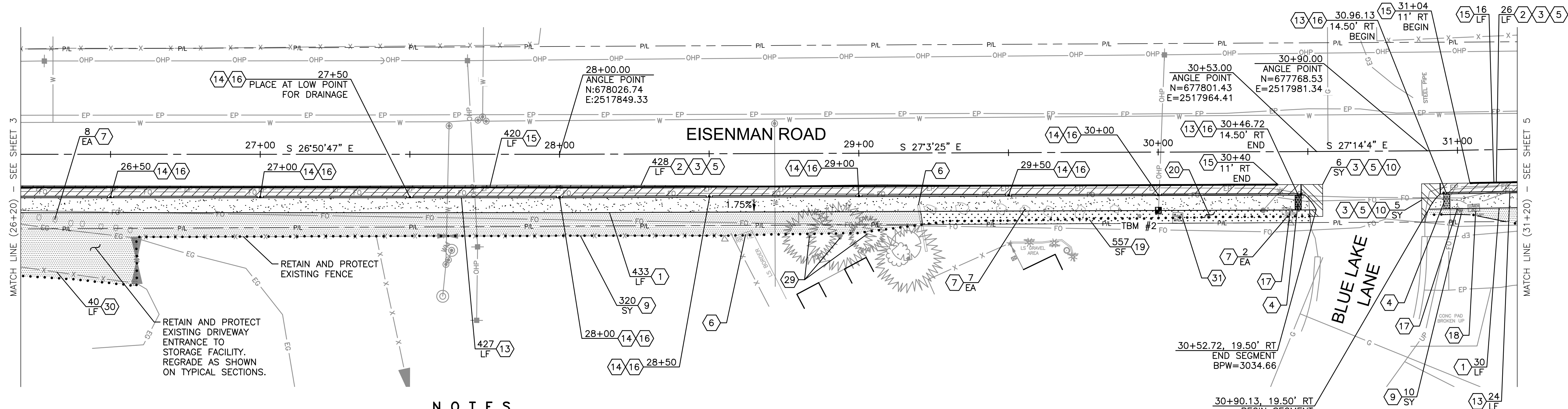
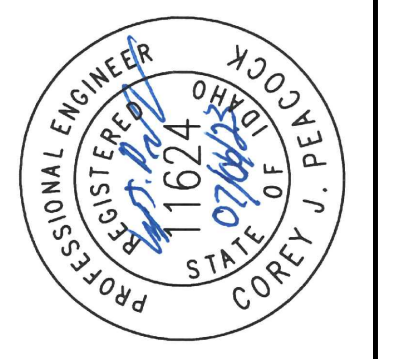
BY: *[Signature]* DATE: 08/10/2023
 ADA COUNTY HIGHWAY DISTRICT

PROJECT NO.	22018
DESIGNED	CJP/JUP
DRAWN	JUP
CHECKED	CJP
APPROVED	
DATE	
REVISIONS	
ITEM	

CIVIL SURVEY CONSULTANTS, INC.
 CONSULTING ENGINEERS AND LAND SURVEYORS
 2893 S. MERIDIAN ROAD
 MERIDIAN, IDAHO 83642
 (208)988-4312

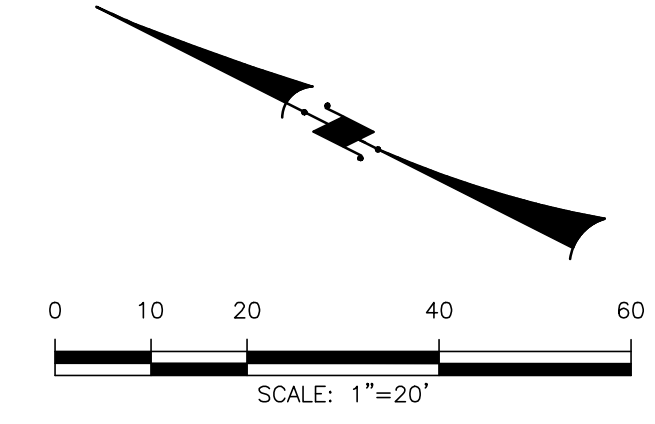
CAPITAL CITY
DEVELOPMENT CORPORATION
EISENMAN ROAD PEDESTRIAN FACILITIES
PATHWAY PLAN & PROFILE

DATE: JULY 2023
 DRAWING: DESIGN.DWG
 JOB NO: 22018
SHEET 3 OF 9



NOTES

- 1) 5' ASPHALT PEDESTRIAN PATHWAY PER DETAIL ON SHEET 2.
- 2) 3' ASPHALT SHOULDER PER DETAIL ON SHEET 2.
- 3) MATCH EXISTING.
- 4) DETECTABLE WARNING DOMES PER SD-712 (ACHD SUPP. TO ISPMC), INCIDENTAL TO PROJECT.
- 5) SAW CUT NEAT MATCH LINE, INCIDENTAL TO PROJECT.
- 6) RELOCATE RAILROAD TIE ON PROPERTY PER PROPERTY OWNER, ITEM 201.4.1.C.1.
- 7) RELOCATE ROCKS ON PROPERTY PER PROPERTY OWNER, ITEM 201.4.1.C.1.
- 8) TYPE C SURFACE RESTORATION (GRAVEL), ITEM 307.4.1.E.1.
- 9) TYPE P SURFACE RESTORATION (ASPHALT) PER SD-303 (ACHD SUPP. TO ISPMC) AND PAVED SHOULDER DETAIL ON SHEET 2, ITEM 307.4.1.G.1.
- 10) EXTRUDED CONCRETE CURB PER DETAIL ON SHEET 2, ITEM 706.4.1.A.13.
- 11) 2' CURB CUT PER DETAIL ON SHEET 2, INCIDENTAL TO ITEM 706.4.1.A.13.
- 12) 4" WHITE PAVEMENT LINE PAINT, ITEM 1104.4.1.A.1.
- 13) CHANNELIZER (WHITE) PER DETAIL ON SHEET 2, ITEM 1104.4.1.C.1.
- 14) RELOCATE ROADSIDE SIGN OUTSIDE OF PATHWAY, INCIDENTAL TO PROJECT.
- 15) ADJUST UTILITY BOX TO GRADE, ITEM 2030.4.1.D.1.
- 16) LAWN SOD RESTORATION, ITEM SP-1.
- 17) SPRINKLER SYSTEM REPAIR OR ADJUSTMENT, ITEM SP-2.
- 18) TRIM EXISTING TREE OR BUSH, ITEM 201.4.1.C.1.
- 19) REMOVE AND RESET FENCE, ITEM 2040.4.1.A.1.
- 20) RETAIN AND PROTECT EXISTING TRANSFORMER PAD, INCIDENTAL TO PROJECT.

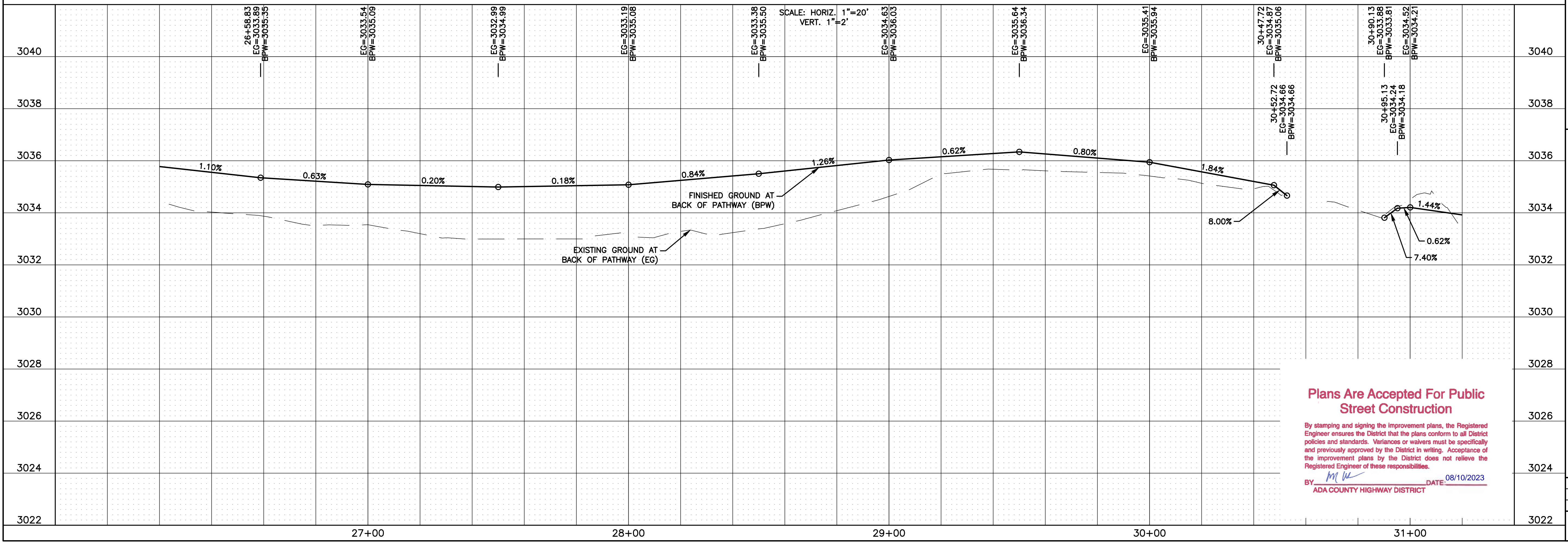


NOTE: STATIONING IS ALONG CENTER OF ROADWAY (DOUBLE YELLOW STRIPE).

BENCHMARKS

TBM #2 - NAIL AT E. FACE OF POWER POLE
 STA. 30+00.01, 19.43' RT
 ELEV.=3036.39
 DATUM: NAVD 88

*CONTRACTOR SHALL MAINTAIN EXISTING DRAINAGE PATTERNS AT ROADWAY INTERSECTIONS. ADJUST TYPE P SURFACE (ASPHALT) RESTORATION LIMITS IF NECESSARY TO MAINTAIN DRAINAGE PATTERNS.



Plans Are Accepted For Public Street Construction

By stamping and signing the improvement plans, the Registered Engineer ensures the District that the plans conform to all District policies and standards. Variances or waivers must be specifically and previously approved by the District in writing. Acceptance of the improvement plans by the District does not relieve the Registered Engineer of these responsibilities.

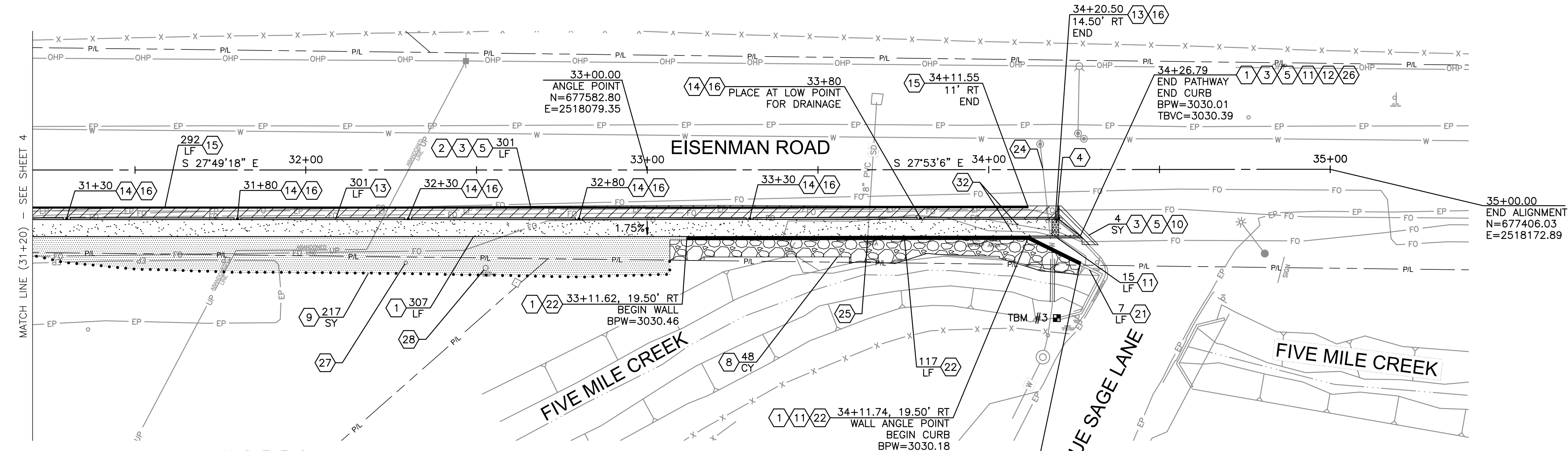
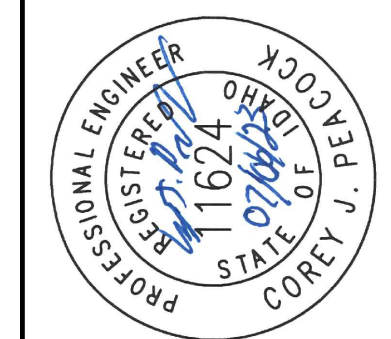
BY: *[Signature]* DATE: 08/10/2023
 ADA COUNTY HIGHWAY DISTRICT

PROJECT NO.	DESIGNED	CIP/JUP	DRAWN	CHECKED	APPROVED
22018					

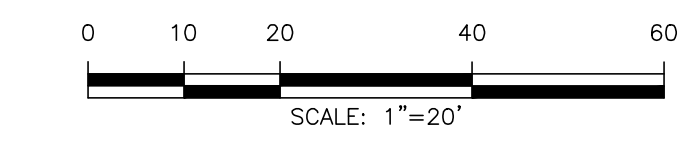
CIVIL SURVEY CONSULTANTS, INC.
 CONSULTING ENGINEERS AND LAND SURVEYORS

2893 S. MERIDIAN ROAD
 MERIDIAN, IDAHO 83642
 (208)988-4312

CAPITAL CITY DEVELOPMENT CORPORATION
EISENMAN ROAD PEDESTRIAN FACILITIES
PATHWAY PLAN & PROFILE



- NOTES**
- 1 5' ASPHALT PEDESTRIAN PATHWAY PER DETAIL ON SHEET 2.
 - 2 3' ASPHALT SHOULDER PER DETAIL ON SHEET 2.
 - 3 MATCH EXISTING.
 - 4 DETECTABLE WARNING DOMES PER SD-712 (ACHD SUPP. TO ISPMC), INCIDENTAL TO PROJECT.
 - 5 SAW CUT NEAT MATCH LINE, INCIDENTAL TO PROJECT.
 - 8 RELOCATE PORTION OF EXISTING LOOSE RIPRAP AS SHOWN, SEE DETAIL ON SHEET 7. ITEM 206.4.1.H.3.
 - 9 TYPE C SURFACE RESTORATION (GRAVEL), ITEM 307.4.1.E.1.
 - 10 TYPE P SURFACE RESTORATION (ASPHALT) PER SD-303 (ACHD SUPP. TO ISPMC) AND PAVED SHOULDER DETAIL ON SHEET 2, ITEM 307.4.1.G.1.
 - 11 STANDARD 6" VERTICAL CURB (NO GUTTER) PER ISPMC SD-701A, ITEM 706.4.1.A.3.
 - 12 5' CURB TERMINUS PER ISPMC SD-707, INCIDENTAL TO ITEM 706.4.1.A.3.
 - 13 EXTRUDED CONCRETE CURB PER DETAIL ON SHEET 2, ITEM 706.4.1.A.13.
 - 14 2' CURB CUT PER DETAIL ON SHEET 2, INCIDENTAL TO ITEM 706.4.1.A.13.
 - 15 4" WHITE PAVEMENT LINE PAINT, ITEM 1104.4.1.A.1.
 - 16 CHANNELIZER (WHITE) PER DETAIL ON SHEET 2, ITEM 1104.4.1.C.1.
 - 21 NEW RAILING ON EXISTING WING WALL, ITEM SP-3.
 - 22 CONCRETE RETAINING WALL WITH RAILING.
 - 23 REGRADE AREA AS NEEDED TO MATCH TOP OF WALL AND PROVIDE AT LEAST 10" OF BACKFILL BEHIND NEW CURB, INCIDENTAL TO PROJECT.
 - 24 RETAIN AND PROTECT EXISTING WATER LINE, INCIDENTAL TO RETAINING WALL ITEM.
 - 25 RETAIN AND PROTECT EXISTING STORM DRAIN PIPE, TRIM BACK TO WALL, INCIDENTAL TO RETAINING WALL ITEM.
 - 26 REMOVE EXISTING ASPHALT CURB WITHIN PATHWAY LIMITS, INCIDENTAL TO PROJECT.
 - 27 RETAIN AND PROTECT EXISTING POWER METER PEDESTAL, INCIDENTAL TO PROJECT.
 - 28 RETAIN AND PROTECT EXISTING WATER SPIGOT, ADJUST TO GRADE IF REQUIRED, INCIDENTAL TO PROJECT.
 - 32 RETAIN AND PROTECT EXISTING FIBER OPTIC LINE, INCIDENTAL TO PROJECT.

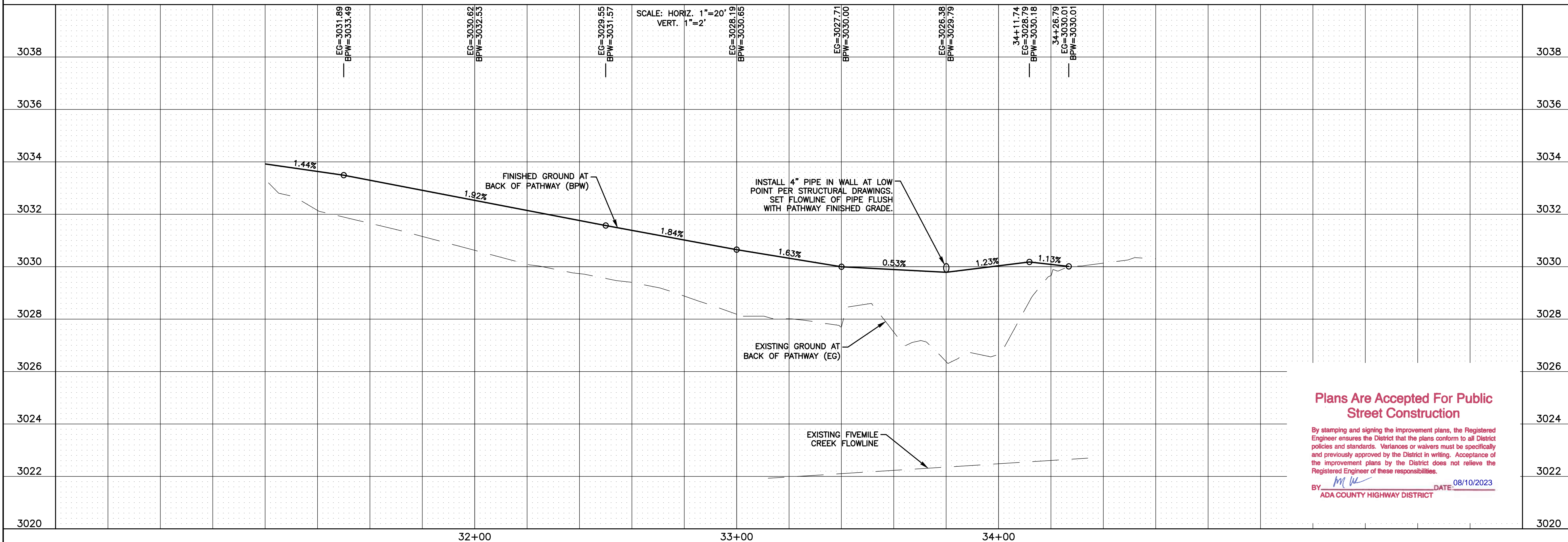


NOTE: STATIONING IS ALONG CENTER OF ROADWAY (DOUBLE YELLOW STRIPE).

BENCHMARKS

TBM #3 - CHISELED BOX AT N.E. WINGWALL CORNER
 STA. 34+19.89, 43.53' RT
 ELEV.=3028.99
 DATUM: NAVD 88

*CONTRACTOR SHALL MAINTAIN EXISTING DRAINAGE PATTERNS AT ROADWAY INTERSECTIONS. ADJUST TYPE P SURFACE (ASPHALT) RESTORATION LIMITS IF NECESSARY TO MAINTAIN DRAINAGE PATTERNS.



Plans Are Accepted For Public Street Construction

By stamping and signing the improvement plans, the Registered Engineer ensures the District that the plans conform to all District policies and standards. Variances or waivers must be specifically and previously approved by the District in writing. Acceptance of the improvement plans by the District does not relieve the Registered Engineer of these responsibilities.

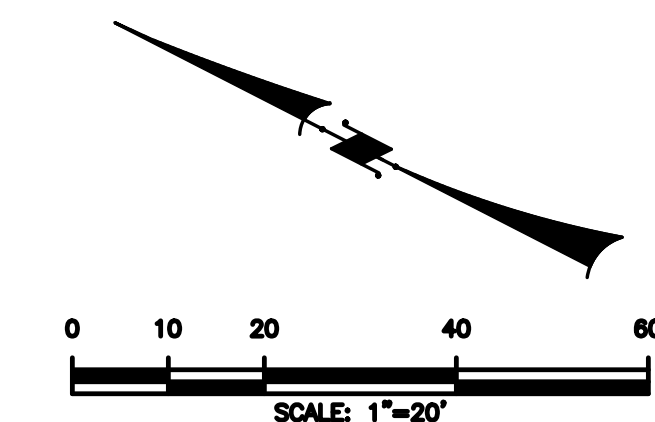
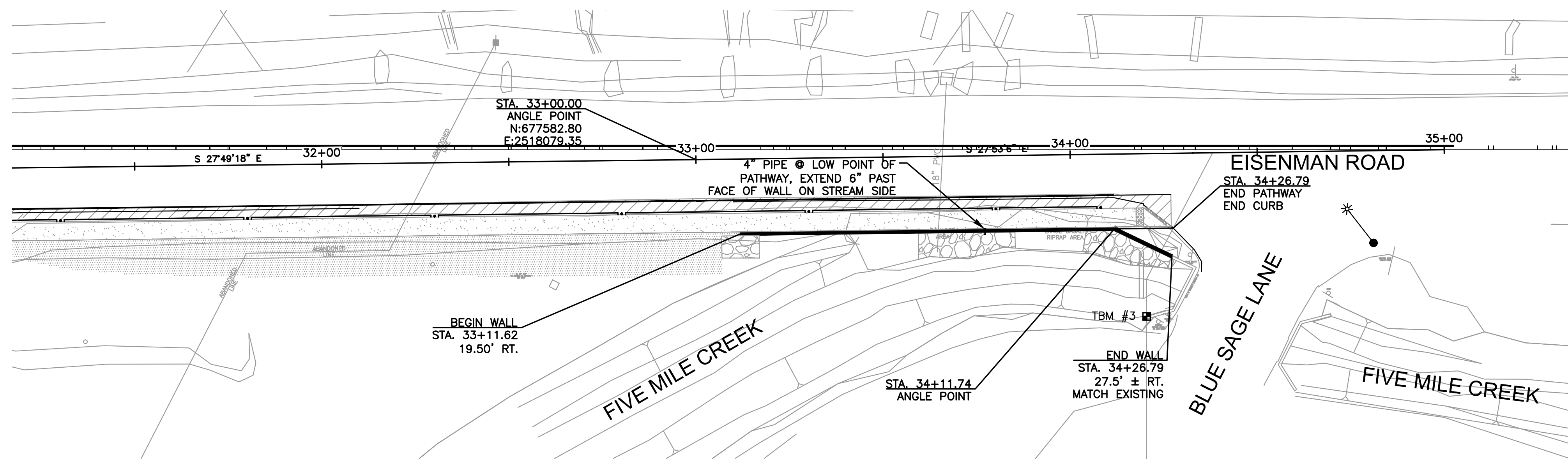
BY *M. W.* DATE: 08/10/2023
 ADA COUNTY HIGHWAY DISTRICT

PROJECT NO.	DESIGNED	DRAWN	CHECKED	APPROVED
22018	CJP/JUP	JUP		

CIVIL SURVEY CONSULTANTS, INC.
 CONSULTING ENGINEERS AND LAND SURVEYORS
 2893 S. MERIDIAN ROAD
 MERIDIAN, IDAHO 83642
 (208)988-4312

CAPITAL CITY DEVELOPMENT CORPORATION
EISENMAN ROAD PEDESTRIAN FACILITIES
PATHWAY PLAN & PROFILE

DATE: JULY 2023
DRAWING: DESIGN.DWG
JOB NO: 22018
SHEET 5 OF 9



NOTE: STATIONING IS ALONG CENTER OF ROADWAY (DOUBLE YELLOW STRIPE).

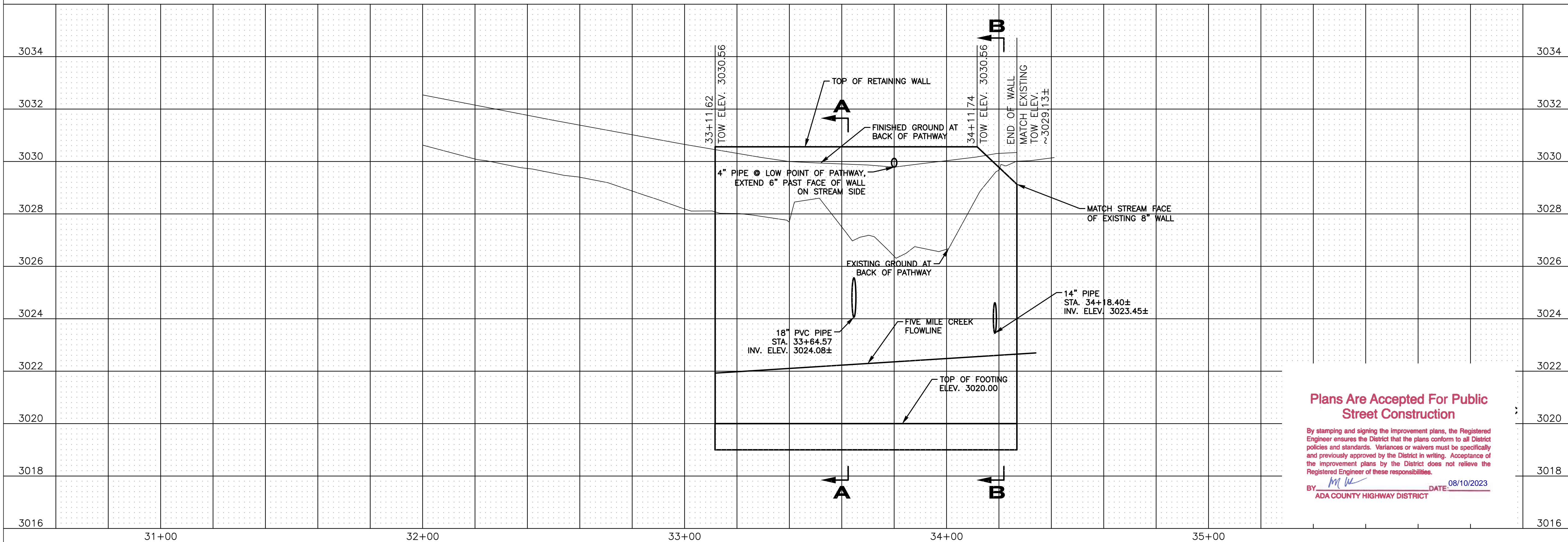
BENCHMARKS
 TBM #3 - CHISELED BOX AT N.E. WINGWALL CORNER
 STA. 34+19.89, 43.53' RT
 ELEV.=3028.99
 DATUM: NAVD 88



PROJECT NO.	DESIGNED	DRAWN	CHECKED	APPROVED
22018				

ELITE EDGE ENGINEERS

12324 W. LANKTREE GULCH ROAD
 STAR, IDAHO 83669
 (208)429-1960



Plans Are Accepted For Public Street Construction
 By stamping and signing the improvement plans, the Registered Engineer ensures the District that the plans conform to all District policies and standards. Variances or waivers must be specifically and previously approved by the District in writing. Acceptance of the improvement plans by the District does not relieve the Registered Engineer of these responsibilities.
 BY: *[Signature]* DATE: 08/10/2023
 ADA COUNTY HIGHWAY DISTRICT

CAPITAL CITY
 DEVELOPMENT CORPORATION
 EISENMAN ROAD PEDESTRIAN FACILITIES
 RETAINING WALL PLAN & PROFILE

GENERAL NOTES

CONSTRUCTION SPECIFICATIONS
 MATERIALS, CONSTRUCTION AND WORKMANSHIP SHALL BE IN ACCORDANCE WITH THE ISPMC (IDAHO STANDARDS FOR PUBLIC CONSTRUCTION), LATEST EDITION INCLUDING SUPPLEMENTS. ANY EXCEPTIONS ARE NOTED IN THE SPECIAL PROVISIONS OR CONSTRUCTION DRAWINGS.

MATERIAL
 ALL CONCRETE SHALL BE CLASS 40A PER SECTION 700 OF ISPMC STANDARDS

CONSTRUCTION
 CONSTRUCTION JOINTS ARE PERMITTED ONLY WHERE SHOWN ON THE PLANS OR AS APPROVED BY THE ENGINEER.

BACKFILL OF THE STRUCTURE SHALL NOT BE MORE THAN 2 FEET DIFFERENCE IN ELEVATION FROM ONE SIDE OF THE STRUCTURE TO THE OTHER.

PLAN DIMENSIONS AND ELEVATIONS
 ALL EXPOSED CORNERS OF POURED CONCRETE SHALL HAVE A 1 1/2" CHAMFER.

REINFORCING STEEL DIMENSIONS ARE MEASURED FROM CENTERLINE OF BAR UNLESS OTHERWISE NOTED.

REINFORCING STEEL CLEARANCE FROM THE OUTSIDE FACE OF CONCRETE SHALL BE 2" UNLESS OTHERWISE NOTED.

REINFORCING STEEL SPLICE LENGTHS SHALL BE IN ACCORDANCE WITH AASHTO SPECIFICATIONS.

INCIDENTAL ITEMS
 ALL ITEMS SHOWN OR NOTED ON PLANS WHICH ARE NOT SPECIFICALLY BID ITEMS ARE CONSIDERED INCIDENTAL ITEMS. THE COST OF FURNISHING AND INSTALLING INCIDENTAL ITEMS WILL NOT BE PAID FOR SEPARATELY.

SHORING MAY BE REQUIRED TO MAINTAIN CONSTRUCTION WITHIN RIGHT OF WAY. SHORING IS INCIDENTAL.

DESIGN SPECIFICATIONS
 STRUCTURE DESIGNED IN ACCORDANCE WITH THE AASHTO "LRFD BRIDGE DESIGN SPECIFICATIONS", 9TH EDITION, 2020.
 DESIGN AND DETAILS IN ACCORDANCE WITH CURRENT ISPMC.

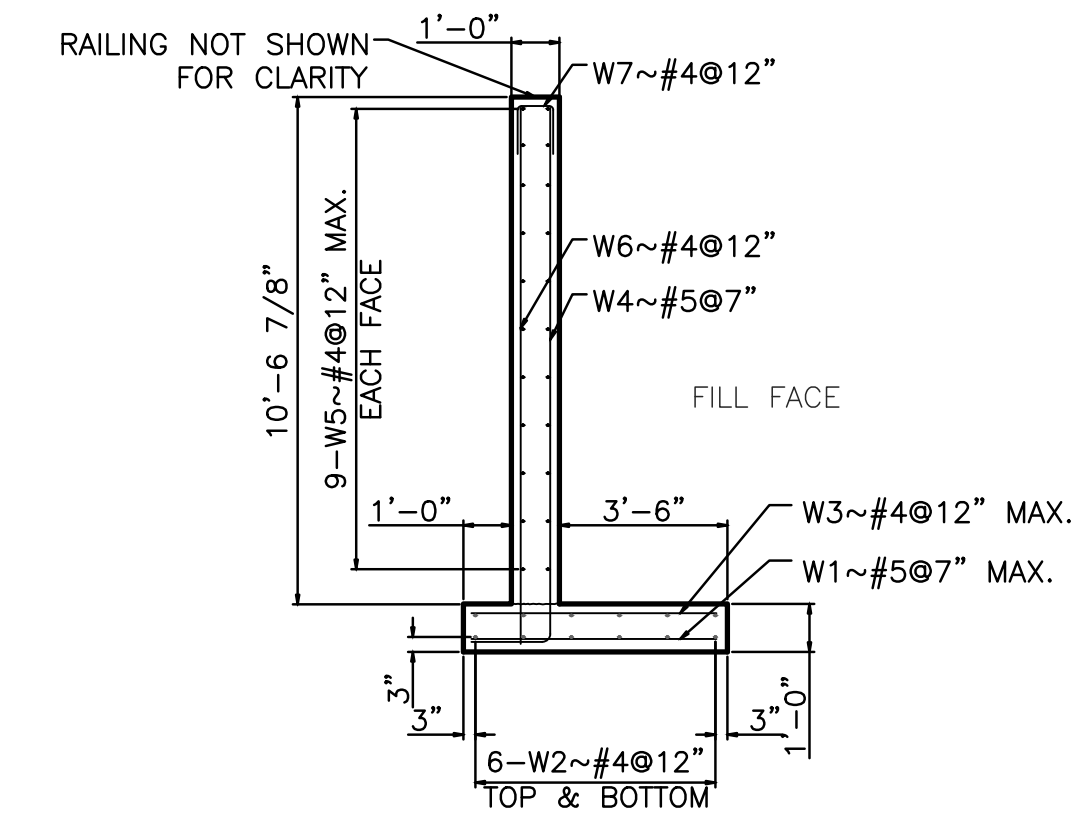
MAXIMUM FOOTING PRESSURES

ALLOWABLE FOOTING PRESSURE (STRENGTH LIMIT) _____ 8,000 #/SF
 ALLOWABLE FOOTING PRESSURE (SERVICE LIMIT STATE) _____ 3,250 #/SF
 COMPUTED FOOTING PRESSURE _____ 1,870 #/SF

DESIGN LOADS

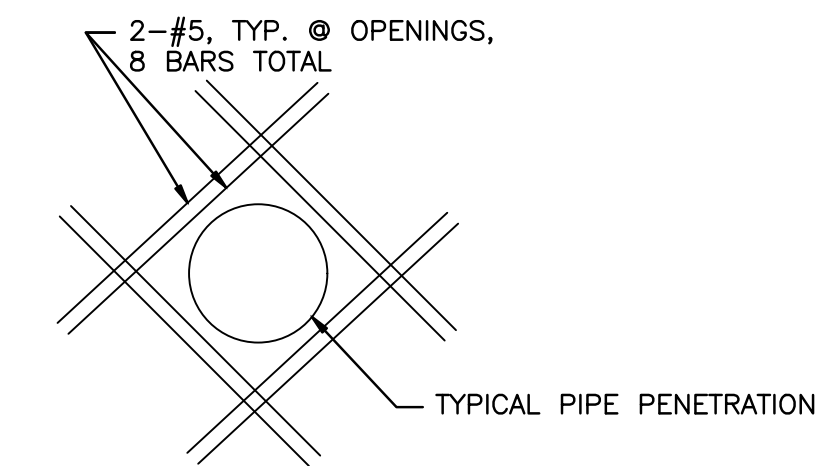
DEAD LOAD _____ CONCRETE = 145 PCF
 DESIGN FILL _____ 130 PCF
 UNIT WEIGHT OF SOIL _____ 125 PCF

LATERAL EQUIVALENT FLUID PRESSURE AT BARREL _____ 65 PCF
 LATERAL EQUIVALENT FLUID PRESSURE AT WINGWALL _____ 43 PCF



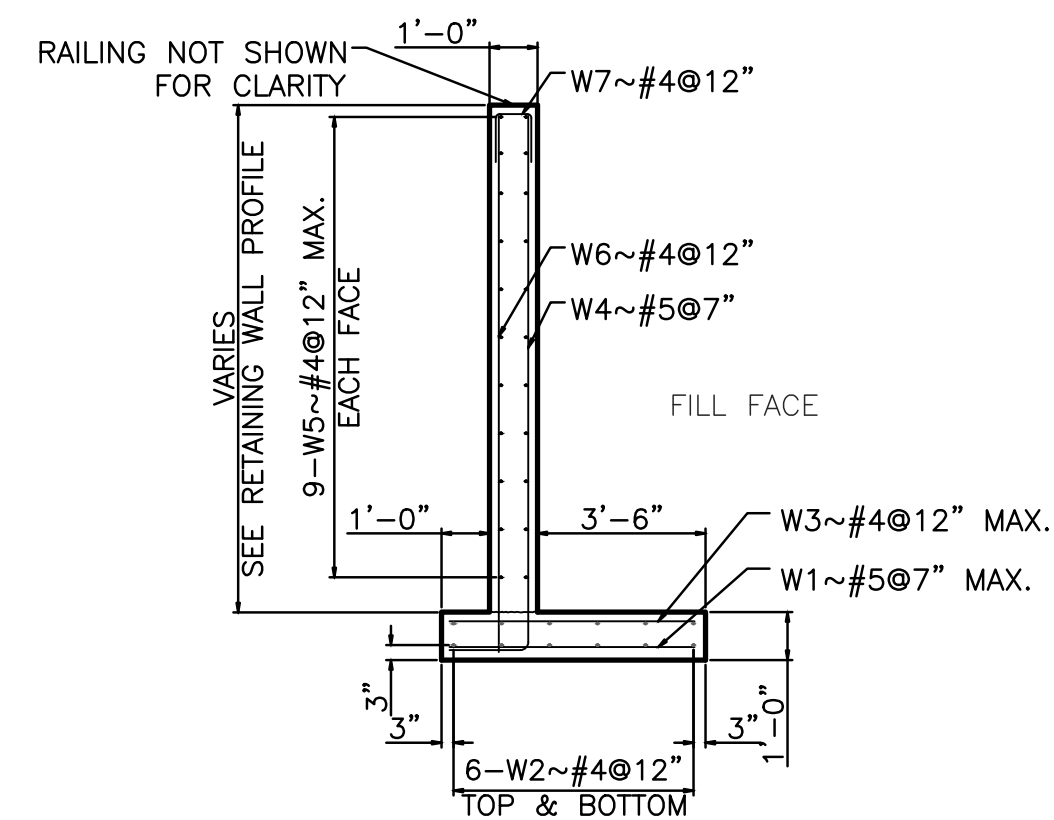
RETAINING WALL SECTION A-A

Scale: 1/4"=1'-0"



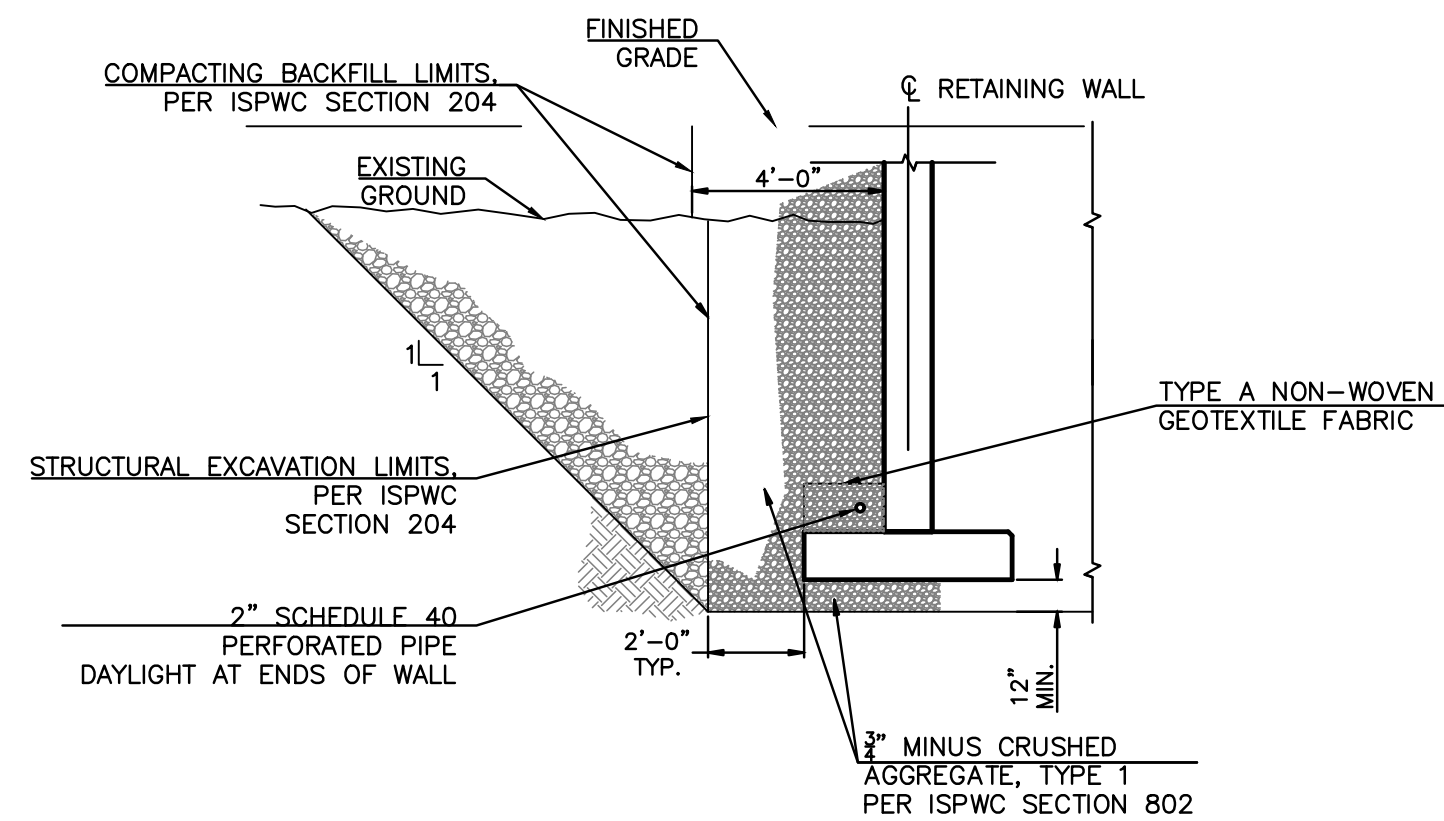
PIPE PENETRATION DETAIL

Scale: N.T.S.



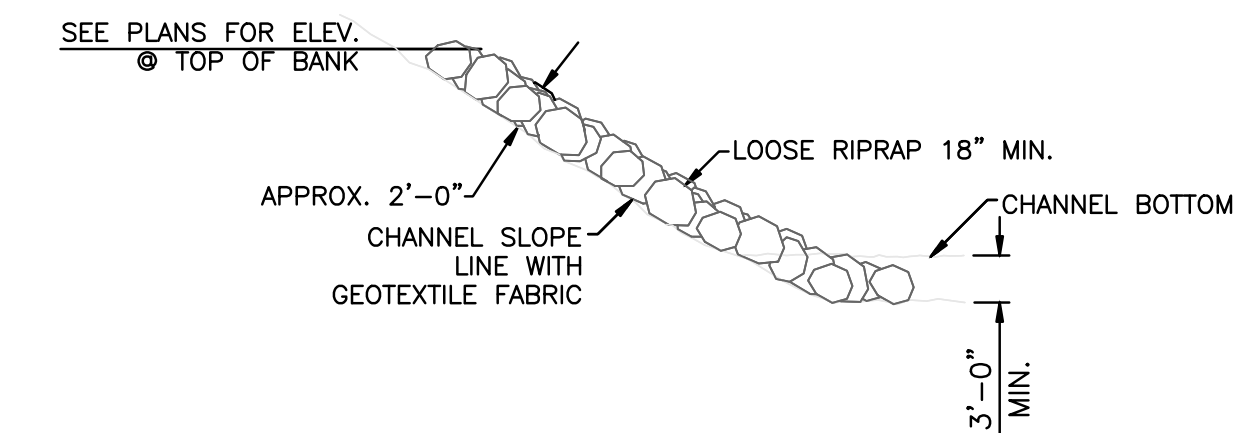
RETAINING WALL SECTION B-B

Scale: 1/4"=1'-0"



EXCAVATION & BACKFILL DETAIL

Scale: N.T.S.



RIP RAP DETAIL

Scale: N.T.S.

Plans Are Accepted For Public Street Construction

By stamping and signing the improvement plans, the Registered Engineer ensures the District that the plans conform to all District policies and standards. Variances or waivers must be specifically and previously approved by the District in writing. Acceptance of the improvement plans by the District does not relieve the Registered Engineer of these responsibilities.

BY *MW* DATE 08/10/2023
 ADA COUNTY HIGHWAY DISTRICT



PROJECT NO.	DESIGNED	DRAWN	CHECKED	APPROVED
22018				

ELITE EDGE ENGINEERS

12324 W. LANKTREE GULCH ROAD
 STAR, IDAHO 83669
 (208)428-1960

**CAPITAL CITY
 DEVELOPMENT CORPORATION
 EISENMAN ROAD PEDESTRIAN FACILITIES
 RETAINING WALL NOTES & DETAILS**

DATE: MAY 2023
 DRAWING: WALL_DESIGN.DWG
 JOB NO: 22018

RAILING NOTES

CONSTRUCTION SPECIFICATIONS
 MATERIALS, CONSTRUCTION AND WORKMANSHIP SHALL BE IN ACCORDANCE WITH THE ISPWC (IDAHO STANDARDS FOR PUBLIC CONSTRUCTION), LATEST EDITION INCLUDING SUPPLEMENTS. ANY EXCEPTIONS ARE NOTED IN THE SPECIAL PROVISIONS OR CONSTRUCTION DRAWINGS.

MATERIAL

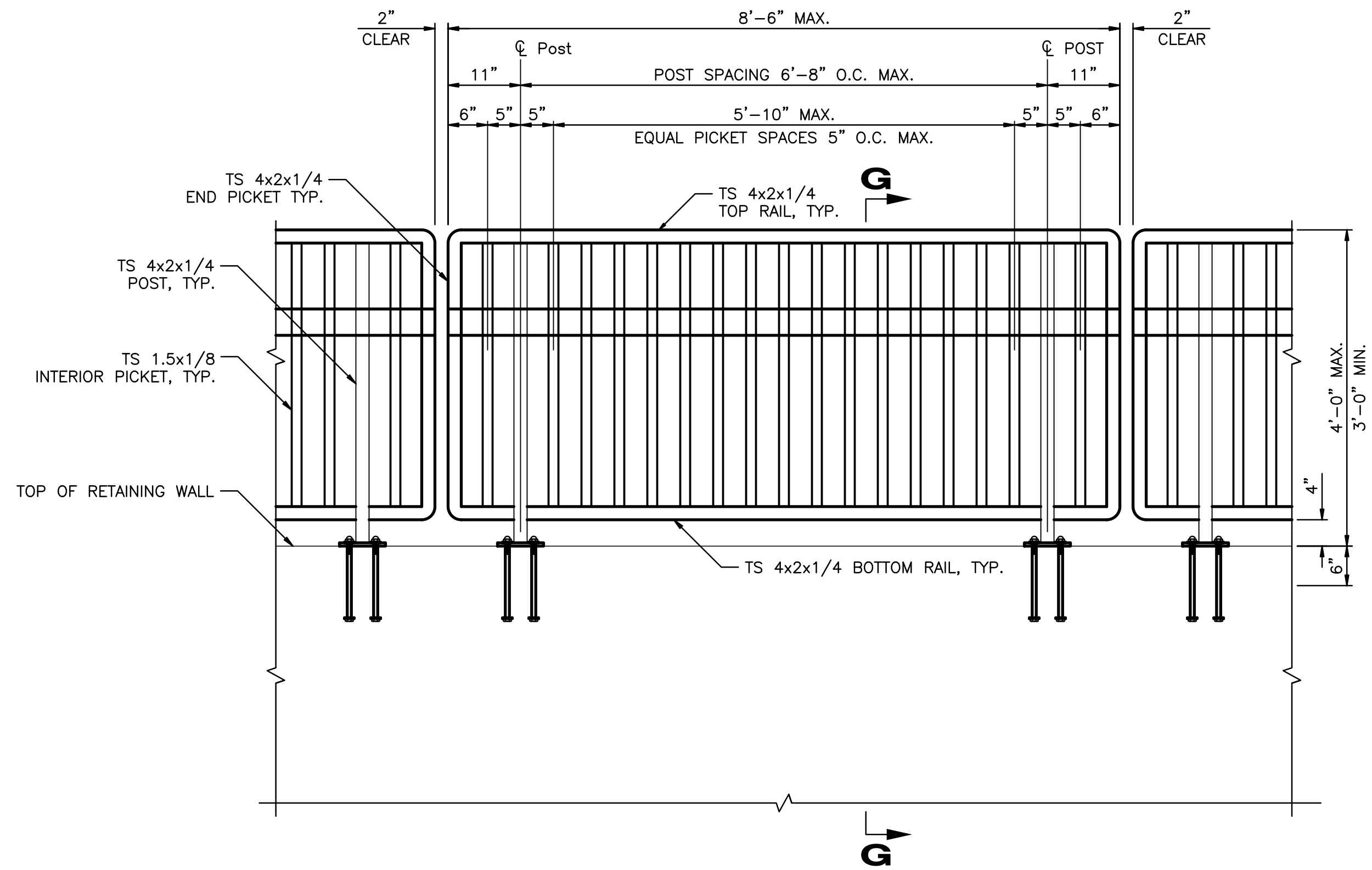
- ANCHOR BOLTS, NUTS AND WASHERS SHALL CONFORM WITH A.S.T.M. F-1554 GRADE 36.
- STRUCTURAL STEEL TUBING SHALL CONFORM WITH A.S.T.M. A-500 GRADE B OR A.S.T.M. A501.
- STRUCTURAL STEEL PLATES AND SLEEVES SHALL CONFORM WITH AASHTO M270 GRADE 36.

GALVANIZING/POWDER COATING

- ALL STEEL PARTS SHALL BE GALVANIZED AFTER FABRICATION IN ACCORDANCE WITH ASTM A-123 AND ASTM A-385.
- ANCHOR BOLTS, NUTS, AND WASHERS SHALL BE GALVANIZED IN ACCORDANCE WITH ASTM A-153.
- ALL GALVANIZED SURFACES SHALL BE FREE OF FINIS, ABRASIONS, ROUGH OR SHARP EDGES, OR OTHER SURFACE DEFECTS.
- THE RAILING SYSTEM SHALL BE POWDER COATED AFTER GALVANIZING WITH A MINIMUM THICKNESS OF 3 MILS. THE COLOR SHALL BE FEDERAL STANDARD 595 NUMBER 17038 (BLACK). A COLOR SAMPLE SHALL BE SUBMITTED FOR APPROVAL.
- POWDER COATING SHOP PROCEDURES FOR PREPARATION OF THE GALVANIZED SURFACES AND APPLICATION PROCESS OF THE POWDER COATING SHALL BE SUBMITTED FOR APPROVAL.

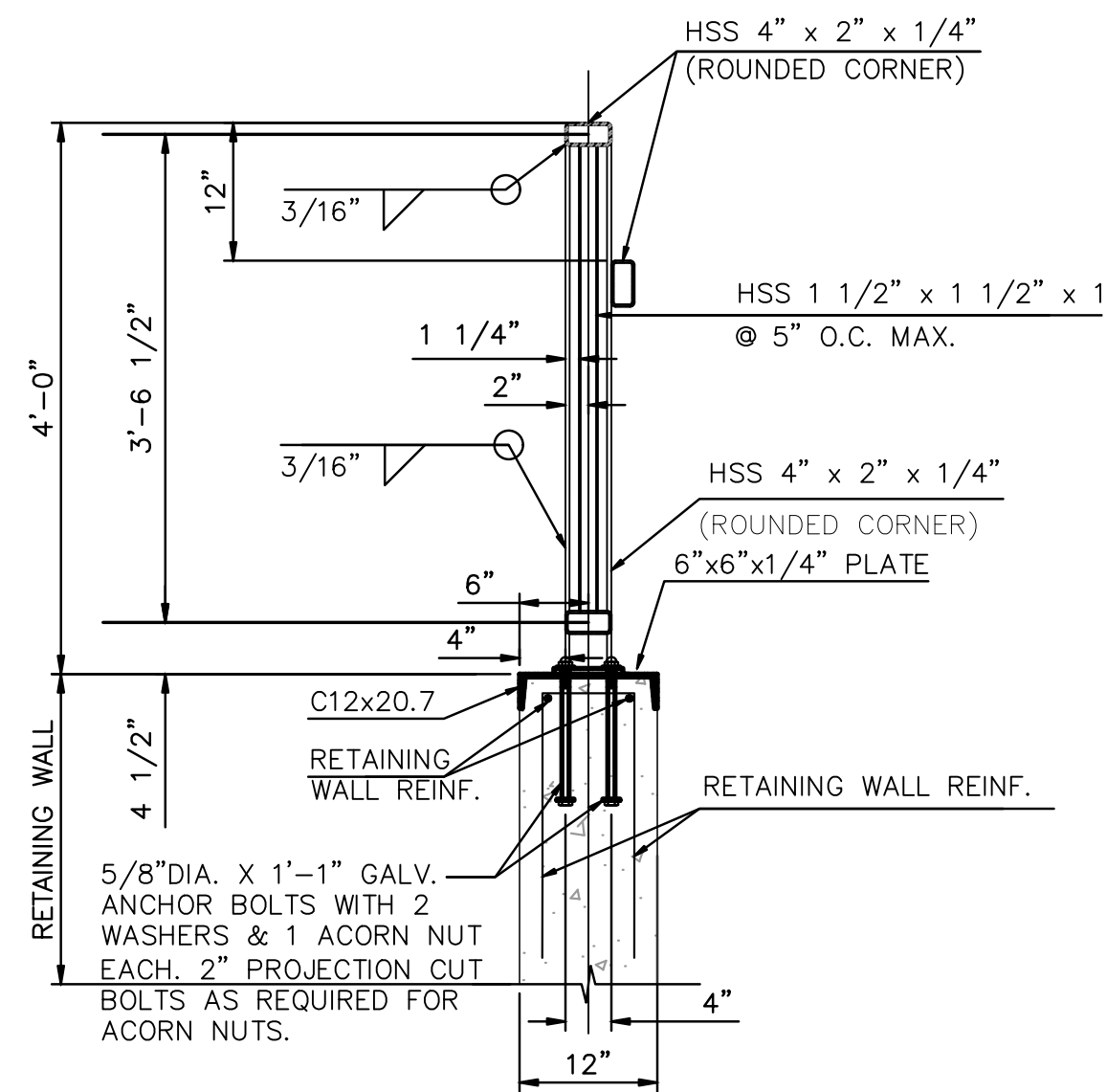
FABRICATION AND ERECTION

- FABRICATION AND ERECTION OF THE RAILING SHALL CONFORM WITH THE CURRENT EDITION OF AASHTO SPECIFICATIONS FOR HIGHWAY BRIDGES AND ITS STANDARD SPECIFICATIONS.
- THE RAILING SHALL BE FABRICATED IN A PLANT EXPERIENCED IN PRODUCING RAILINGS AND ARCHITECTURAL METAL WORK AND SHALL BE ERECTED BY SKILLED WORKMEN EXPERIENCED IN THIS TYPE OF WORK.
- SHOP DRAWINGS SHALL BE SUBMITTED TO THE ENGINEER ELECTRONICALLY IN PDF FORMAT AND SHALL INCLUDE COMPLETE DIMENSIONS AND DETAILS OF FABRICATION INCLUDING AN ERECTION DIAGRAM. MATERIALS BEING USED SHALL BE CLEARLY SPECIFIED. BEFORE PROJECT COMPLETION, THE CONTRACTOR SHALL FURNISH THE ENGINEER ELECTRONIC AS-BUILT SHOP DRAWINGS IN PDF FORMAT.
- ALL POSTS SHALL BE PLUMB.
- ALL ENDS OF TUBE SECTIONS AT SPLICES SHALL BE SAWED OR MILLED. CUT ENDS SHALL BE TRUE, SMOOTH AND FREE FROM BURRS OR RAGGED EDGES.
- VENT HOLES FOR GALVANIZING SHALL BE PROVIDED AS REQUIRED AND SHOWN ON THE SHOP DRAWINGS. VENT HOLES SHALL BE DRILLED AWAY FROM TRAFFIC FACE AND NOT ON THE TOP SURFACE OF THE HORIZONTAL TUBE.
- RAILING SYSTEM SHALL BE CONTINUOUS. EACH JOINT IN A RAIL LENGTH SHALL BE LOCATED AT THE SAME POSITION IN THE SECTION AND SHALL BE SPLICED AS DETAILED.
- ALTERNATE SPLICE DETAILS MAY BE SUBMITTED FOR APPROVAL ON THE SHOP DRAWINGS.
- RAILING SHALL CONTINUE ONTO THE EXISTING BRIDGE WINGWALL AND BE CONNECTED BY DRILLING AND GROUTING ANCHOR BOLTS WITH HILTI HIT HY 200 EPOXY GROUT OR APPROVED EQUAL WITH 11" EMBEDMENT.



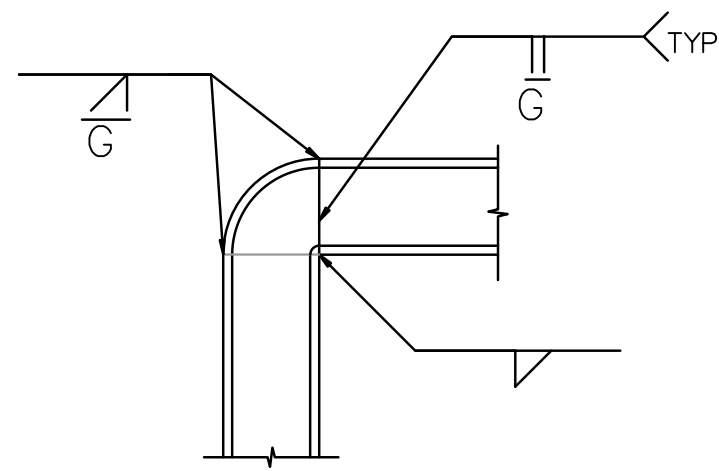
TYPICAL RAIL ELEVATION

Scale: N.T.S.



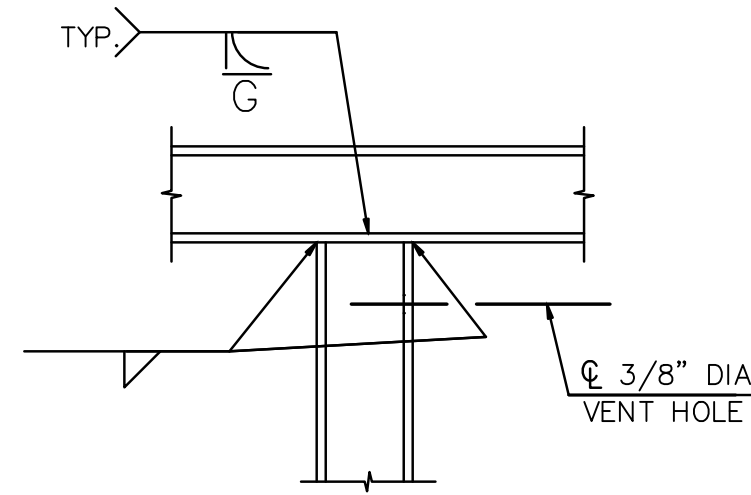
RAIL SECTION G-G

Scale: 3/8"=1'-0"



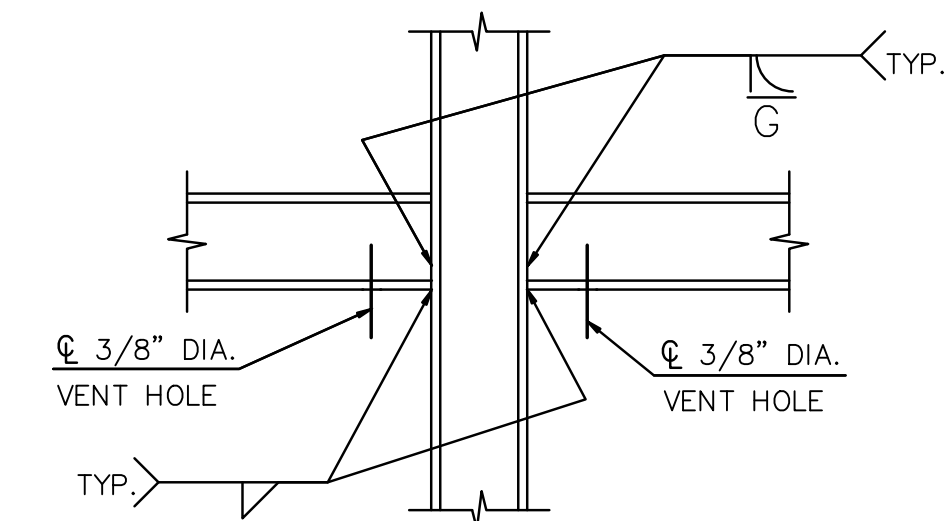
RAIL DETAIL A

Scale: N.T.S.



RAIL DETAIL B

Scale: N.T.S.



RAIL DETAIL C

Scale: N.T.S.

Plans Are Accepted For Public Street Construction

By stamping and signing the improvement plans, the Registered Engineer ensures the District that the plans conform to all District policies and standards. Variances or waivers must be specifically and previously approved by the District in writing. Acceptance of the improvement plans by the District does not relieve the Registered Engineer of these responsibilities.

BY *M. K.* DATE: 08/10/2023
 ADA COUNTY HIGHWAY DISTRICT



PROJECT NO.	DESIGNED	DRAWN	CHECKED	APPROVED
22018				

DATE	REVISIONS
	ITEM

ELITE EDGE ENGINEERS

12324 W. LANKTREE GULCH ROAD
 STAR, IDAHO 83669
 (208)429-1960

CAPITAL CITY DEVELOPMENT CORPORATION
EISENMAN ROAD PEDESTRIAN FACILITIES
RAILING DETAILS

DATE: MAY 2023
 DRAWING: WALL_DESIGN.DWG
 JOB NO: 22018

